

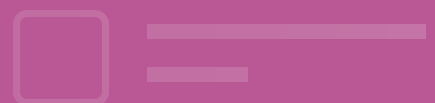
# 11+ Westmidlands VR, NVR & SR, English, Maths Tests

✔ 8 Full-Length papers

✔ 1,400+ Questions

✔ Detailed Answers

✔ Topic-wise Exercises

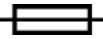


# 11+ Westmidlands


## Paper 3 - Session 2

---

### Instructions:

1. Do not turn over this page until instructed to do so.
2. This test contains four tests:
  - Test 1: Verbal Reasoning (VR)
  - Test 2: Non-Verbal and Spatial Reasoning (NVR/SR)
  - Test 3: English
  - Test 3: Mathematics
3. The front page of each test contains specific instructions. **Read them carefully** before starting.
4. Listen carefully to the instructions **read out by the invigilator**. They will guide you through the test process.
5. Check that your **name** and **date of birth** are correctly shown on the answer sheet.
6. In the answer sheet, **mark** the correct answer by **drawing a line with your pencil** through the small rectangular box beside it like this. 
7. You must make sure that you **mark your answer in the box** that has the same question number as the question you are doing in the paper.
8. If you make a mistake, rub out your mark as well as you can and mark your new answer.
9. The answer sheet will be marked by a computer.
10. You may **do any rough work** on the question paper.
11. This is a **multiple-choice test**. The complete test takes one hour, with approximately 15 minutes for each section.
12. You will need an HB pencil, an eraser and a pencil sharpener. You will not be allowed to use a ruler, a calculator, a protractor, or scrap paper.

### to stop:

Do not turn the page until told to do so 

### to go on:

Please go on to the next page >>>

**or whether you have reached the end of the section/test.**

END OF REASONING TEST

# 11+ Westmidlands Session 2 - Test 1 Verbal Reasoning

---

## Instructions:

1. Do not turn over this page until instructed to do so.
2. There are **four sub-tests**
3. Each sub-test begins with a practice section, where:
  - The **first question** is solved with a detailed solution.
  - The **remaining one question** is for you to attempt.
4. The practice section is followed by the main questions.
5. Each sub-test has **five main questions**.
6. Total time for the test is **15 minutes**.
7. Work quickly and carefully through the questions.
8. If you finish early, **go back and check** your work.
9. This is a **multiple-choice test**. Each question carries **1 mark**.



## Verbal Reasoning Sub-test 1 Practice Section

### Letters for Numbers

*In these questions, letters represent numbers. Work out the answer to the sum, then find its corresponding letter.*

#### Example

If  $A = 10$ ,  $B = 5$ ,  $C = 15$ ,  $D = 20$ ,  $E = 30$ ,  
then  $A + B + C = [?]$

**A** A

**B** B

**C** C

**D** D

**E** E

*The answer is **E**. The numbers corresponding to the letters are  $A = 10$ ,  $B = 5$ ,  $C = 15$ ,  $D = 20$ , and  $E = 30$ . Applying the given equation:  $A + B + C = 10 + 5 + 15 = 30$ . Since **30** corresponds to E, the answer is **E**.*

*Now try this practice question and mark the correct option on the answer sheet.*

**P1**

If  $F = 12$ ,  $G = 6$ ,  $H = 24$ ,  $I = 3$ ,  $J = 9$ ,  
then  $F \times G \div I = [?]$

**A** F

**B** G

**C** H

**D** I

**E** J

End of Verbal Reasoning Sub-test 1 Practice Section.



## Verbal Reasoning Sub-test 1

This section is **marked**.

**In these questions, letters represent numbers. Work out the answer to the sum, then find its corresponding letter and mark the correct answer on the answer sheet.**

1

If  $K = 8$ ,  $L = 4$ ,  $M = 16$ ,  $N = 12$ ,  $O = 56$ ,  
then  $K + L \times N = [?]$

A K

B L

C M

D N

E O

2

If  $J = 15$ ,  $K = 8$ ,  $L = 24$ ,  $M = 3$ ,  $N = 69$ ,  
then  $N - (J + K) \times M + L = [?]$

A J

B K

C L

D M

E N

3

If  $P = 25$ ,  $Q = 4$ ,  $R = 30$ ,  $S = 50$ ,  $T = 95$ ,  
then  $P + Q \times R - S = [?]$

A T

B P

C Q

D R

E S

4

If  $P = 15$ ,  $Q = 3$ ,  $R = 17$ ,  $S = 12$ ,  $T = 6$ ,  
then  $P - S \div Q + T = [?]$

A P

B R

C Q

D S

E T



5

If  $U = 10$ ,  $V = 5$ ,  $W = 20$ ,  $X = 15$ ,  $Y = 21$   
then  $(U + V) \div X + W = [?]$

A U

B V

C W

D X

E Y

End of Verbal Reasoning Sub-test 1



## Verbal Reasoning Sub-test 2 Practice Section

### Related Numbers

*In these questions, find the number that completes the final set of numbers in the same way as the first two sets.*

#### Example

42 [18] 24      57 [32] 25      81 [?] 36

**A** 45      **B** 37      **C** 50      **D** 117      **E** 54

*The answer is **A**. In each set, the **third number** is **subtracted** from the **first** to get the **middle number**:  $42 - 24 = 18$ ,  $57 - 25 = 32$ , so  $81 - 36 = 45$ .*

*Now try this practice question and mark the correct option on the answer sheet.*

**P2** 5 [17] 6      8 [26] 9      10 [?] 12

**A** 22      **B** 28      **C** 32      **D** 34      **E** 40

End of Verbal Reasoning Sub-test 2 Practice Section.



## Verbal Reasoning Sub-test 2

*This section is marked.*

***In these questions, find the number that completes the final set of numbers in the same way as the first two sets and mark the correct answer on the answer sheet.***

**6**      3 [11] 8      5 [19] 14      7 [?] 20  
A 13      B 22      C 27      D 34      E 41

**7**      8 [14] 12      15 [27] 24      11 [?] 16  
A 9      B 19      C 20      D 24      E 31

**8**      5 [3] 15      8 [4] 32      12 [?] 72  
A 4      B 5      C 6      D 7      E 8

**9**      3 [15] 4      5 [40] 7      8 [?] 11  
A 64      B 72      C 80      D 88      E 96



10

12 [66] 6

18 [136] 8

24 [?] 10

A 174

B 190

C 210

D 230

E 240

End of Verbal Reasoning Sub-test 2



## Verbal Reasoning Sub-test 3 Practice Section

### Cloze Sentences

*In these questions, choose the word that best completes the sentence.*

#### Example

When it started to rain, Sarah quickly opened her \_\_\_\_\_ to stay dry.

- A** umbrella                      **B** bicycle                      **C** notebook  
**D** lunchbox                      **E** pencil

*The answer is **umbrella**. The phrase 'to stay dry' suggests that Sarah needed protection from the rain. 'Umbrella' is used for this purpose, making it the correct choice.*

*Now try this practice question and mark the correct option on the answer sheet.*

**P3**

After winning the race, David felt \_\_\_\_\_ as he received the gold medal.

- A** nervous                      **B** afraid                      **C** proud  
**D** upset                      **E** tired

End of Verbal Reasoning Sub-test 3 Practice Section.



## Verbal Reasoning Sub-test 3

*This section is **marked**.*

***In these questions, choose the word that best completes the sentence and mark the correct answer on the answer sheet.***

- 11** The children played \_\_\_\_\_ in the park all afternoon.
- A** quietly                      **B** happily                      **C** sadly
- D** angrily                      **E** nervously

- 12** After studying hard for the test, Max felt \_\_\_\_\_ when he saw his good grade.
- A** disappointed              **B** confused                      **C** proud
- D** worried                      **E** bored

- 13** The sky grew dark and \_\_\_\_\_ just before the thunderstorm began.
- A** sunny                      **B** cloudy                      **C** bright
- D** colorful                      **E** warm



14

During lunch break, Emma and her friends \_\_\_\_\_ about their favourite movies.

A slept

B cried

C talked

D fought

E wrote

15

I was \_\_\_\_\_ to finish my homework before dinner so I could watch my favourite TV show.

A unable

B eager

C scared

D sorry

E certain

End of Verbal Reasoning Sub-test 3



## Verbal Reasoning Sub-test 4 Practice Section

### Making Words - Compound words

*In these questions, find two words, that together make one correctly spelt word, without changing the order of the letters. The word from the first group always comes first.*

#### Example

water    rose    dow    melon    bush

**A** water      **B** dow      **C** rose      **D** bush      **E** melon

*The answer is **water melon**. The two words are "**water**" from the first group and "**melon**" from the second group, forming the word "**watermelon**".*

*Now try this practice question and mark the correct option on the answer sheet.*

**P4**    straw    car    win    wood    berry

**A** straw      **B** car      **C** berry      **D** wood      **E** win

End of Verbal Reasoning Subtest 4 Practice Section.



## Verbal Reasoning Sub-test 4

*This section is marked.*

***In these questions, find two words, one from each group, that together make one correctly spelt word, without changing the order of the letters. The word from the first group always comes first. Mark the two correct options on the answer sheet.***

16

rain door book bow phone

A door B rain C book D bow E phone

17

tooth ear cup paste warm

A cup B ear C tooth D paste E warm

18

sea tooth note brush grass

A sea B tooth C note D brush E grass

19

day water key light shell

A day B water C key D light E shell



20

thunder    nose    ear    storm    father

**A** thunder    **B** storm    **C** ear    **D** nose    **E** father

End of Verbal Reasoning Sub-test 4

# 11+ West Midlands

## Session 1 - Test 2

### Non-Verbal & Spatial Reasoning

---

#### Instructions:

1. Do not turn over this page until instructed to do so.
2. There are **three sub-tests**.
3. Each sub-test begins with a **practice section**, where:
  - The **first question** is solved with a detailed solution.
  - The remaining **one question** is for you to attempt.
4. The practice section is followed by the main questions.
5. Each sub-test has **six main questions**.
6. Total time for the test is **15 minutes**.
7. Work quickly and carefully through the questions.
8. If you finish early, **go back and check** your work.
9. This is a **multiple-choice test**. Each question carries **1 mark**.

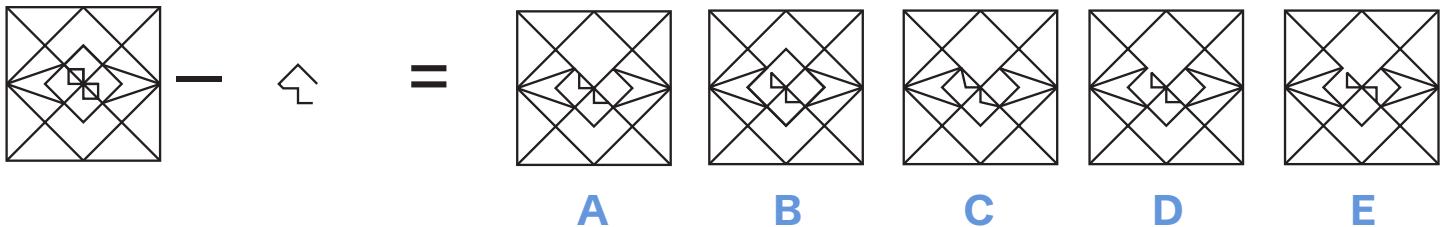


## Non-Verbal Reasoning Sub-test 1 Practice Section

### Merge Shapes

*On the left, two shapes are shown that are either added or subtracted to form a new shape. From the five answer choices on the right, select the shape that correctly represents the result.*

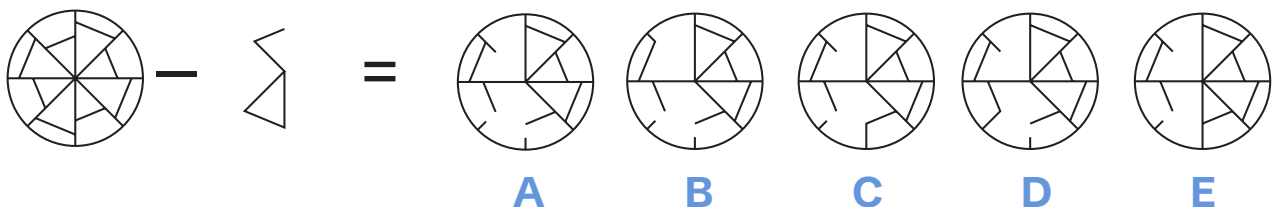
#### Example



*The correct answer is **D**. Right most shape is subtracted from left most shape. Option **D** correctly displays the resulting merged shape.*

*Now try this practice question and mark the correct option on the answer sheet.*

**P1**



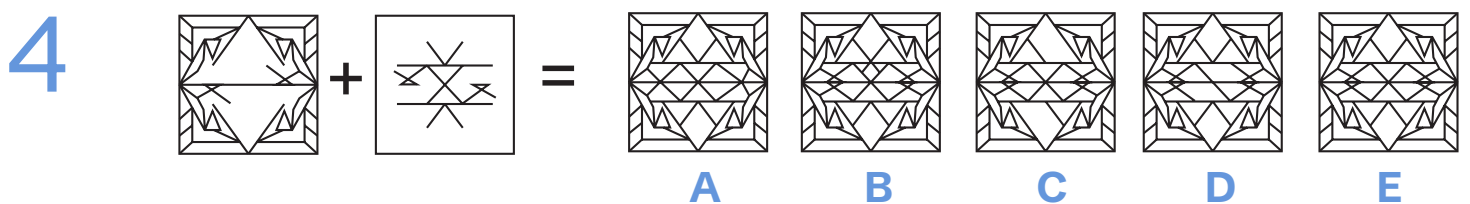
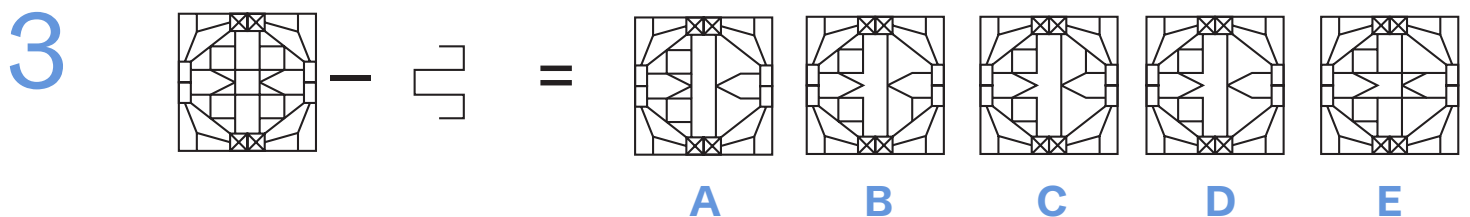
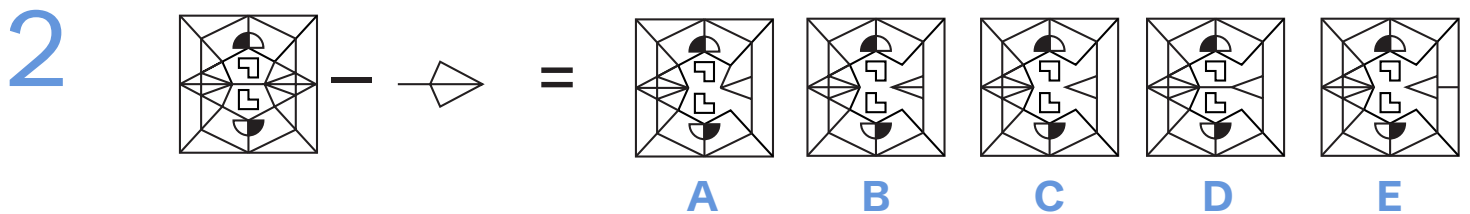
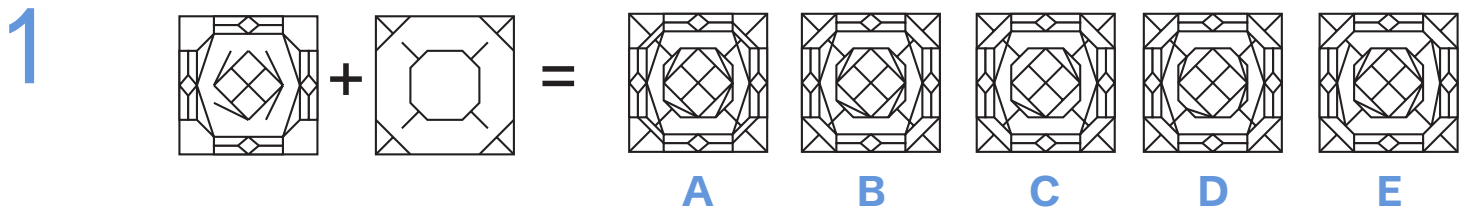
End of the Non-Verbal Reasoning Sub-test 1 Practice Section

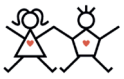


## Non-Verbal Reasoning Sub-test 1

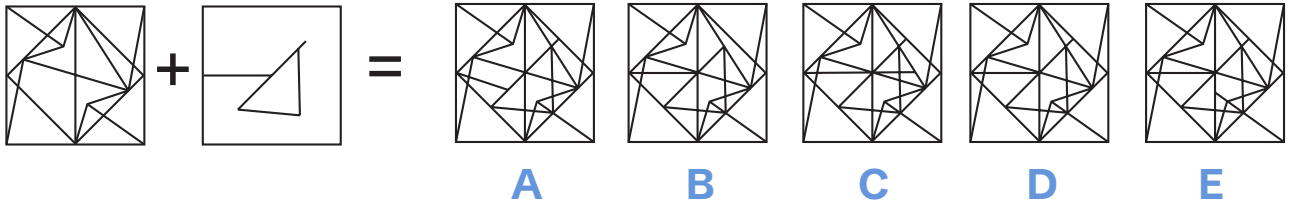
This section is **marked**.

On the left, two shapes are shown that are either added or subtracted to form a new shape. From the five answer choices on the right, select the shape that correctly represents the result and mark its letter on the answer sheet.

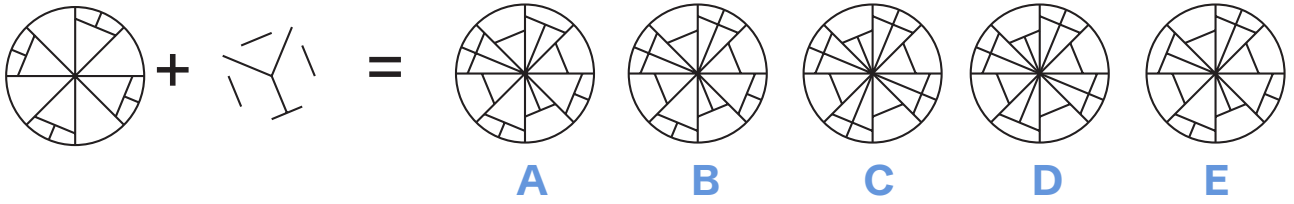




5



6



End of Non-Verbal Reasoning Sub-test 1

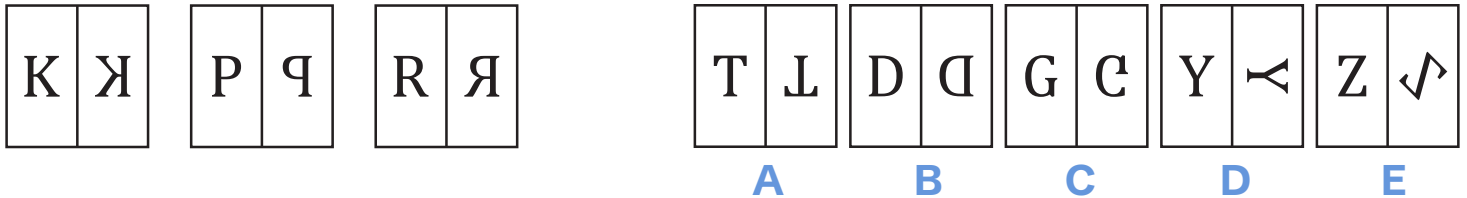


## Non-Verbal Reasoning Sub-test 2 Practice Section

### Like Figures

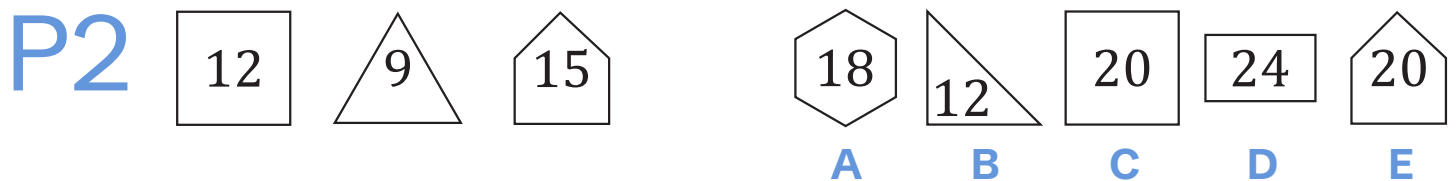
*On the left, three shapes share a common pattern or rule. From the five answer choices on the right, select the shape that follows the same pattern as the ones on the left.*

#### Example



*The correct answer is **B**. In each figure, the letters has a mirror image on right side.*

*Now try this practice question and mark the correct option on the answer sheet.*



End of the Non-Verbal Reasoning Sub-test 2 Practice Section



## Non-Verbal Reasoning Sub-test 2

This section is **marked**.

On the left, three shapes share a common pattern or rule. From the five answer choices on the right, select the shape that follows the same pattern as the ones on the left and mark its letter on your answer sheet.

7

K	M	O	P
P	O	M	K

#	\$	△	+
+	△	\$	#

1	7	4	9
9	4	7	1

T	U	W	X
V	W	V	T

+	-	○	-
△	○	△	+

D	#	8	P
P	8	#	D

△	□	○	#
#	△	□	△

T	U	9	V
Z	9	Z	P

A

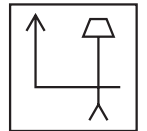
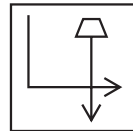
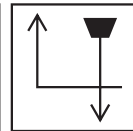
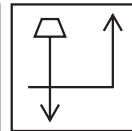
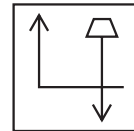
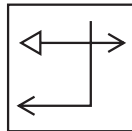
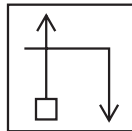
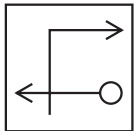
B

C

D

E

8



A

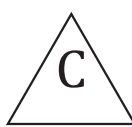
B

C

D

E

9



A

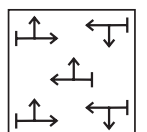
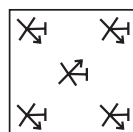
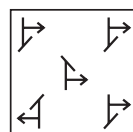
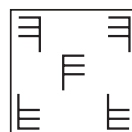
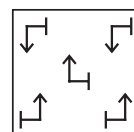
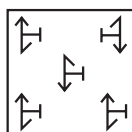
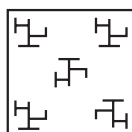
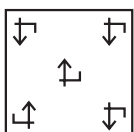
B

C

D

E

10



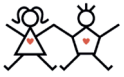
A

B

C

D

E



11

8	7
14	16

9	10
20	18

11	22
44	22

9	21
42	20

15	8
18	31

11	7
49	33

13	18
36	26

12	7
21	24

A

B

C

D

E

12

R	M	F	O
T	F	M	L
L	O	R	T

A	S	T	U
D	T	S	K
K	U	A	D

U	L	K	X
A	K	L	W
W	X	U	A

Z	Q	M	T
D	M	Q	S
S	T	Z	D

Z	Q	M	T
S	T	D	Q
D	M	Z	S

Z	Q	Q	Z
D	M	M	D
S	T	T	S

Z	Q	Q	S
D	M	D	T
S	T	Z	M

Z	Q	Z	Q
D	M	S	M
S	T	D	T

A

B

C

D

E

End of Non-Verbal Reasoning Sub-test 2

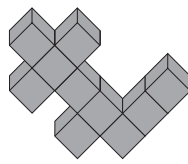
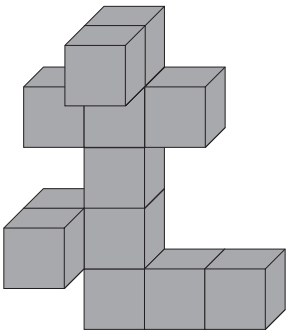


## Spatial Reasoning Sub-test 3 Practice Section

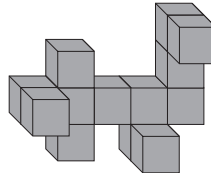
### 3D Shape Rotation

**A 3D shape is shown on the left. On the right, there are five answer choices, each showing a possible rotation of the given shape. One of them is the correct rotated version. Identify the correct rotated figure.**

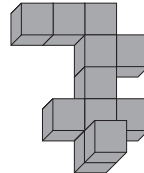
#### Example



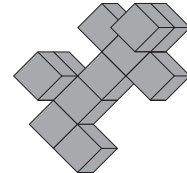
A



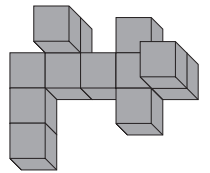
B



C

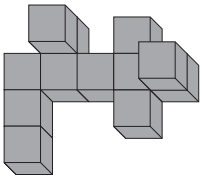


D



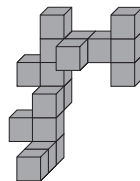
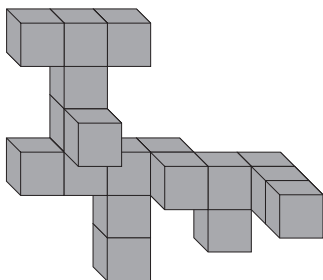
E

*The correct answer is E.*

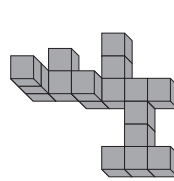


*Now try this practice question and mark the correct option on the answer sheet.*

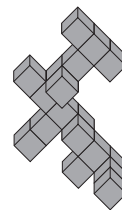
P3



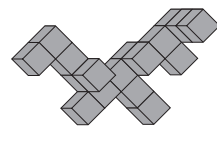
A



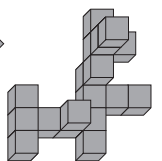
B



C



D



E

End of the Spatial Reasoning Sub-test 3 Practice Section

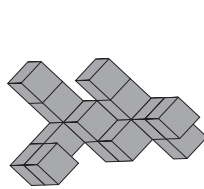
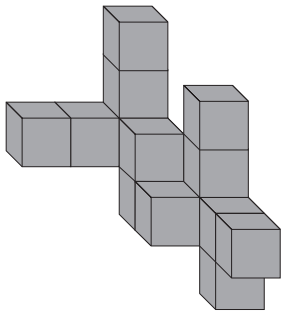


### Spatial Reasoning Sub-test 3

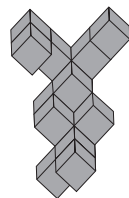
This section is **marked**.

**A 3D shape is shown on the left. On the right, there are five answer choices, each showing a possible rotation of the given shape. One of them is the correct rotated version. Identify the correct rotated figure and mark its letter on your answer sheet.**

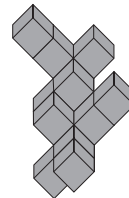
13



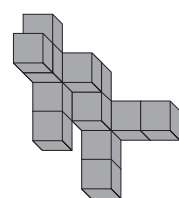
A



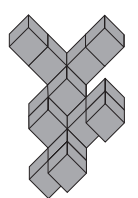
B



C

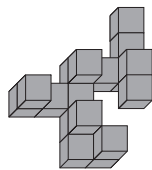
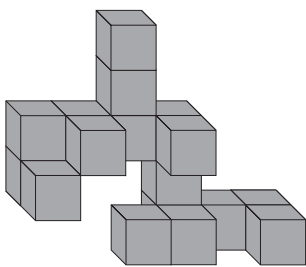


D

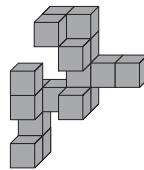


E

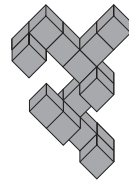
14



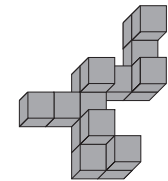
A



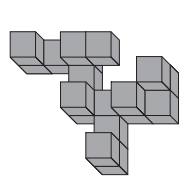
B



C

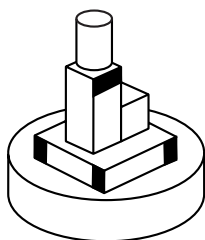


D

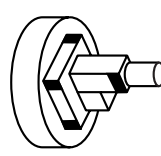


E

15



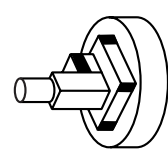
A



B



C



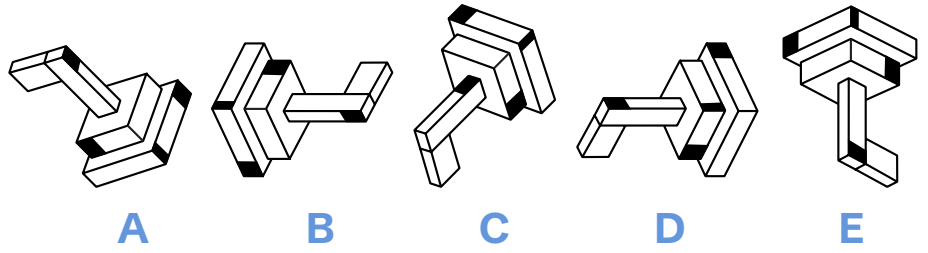
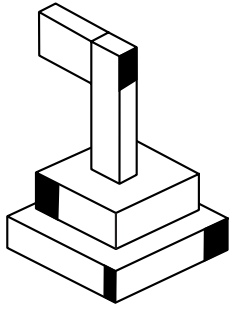
D



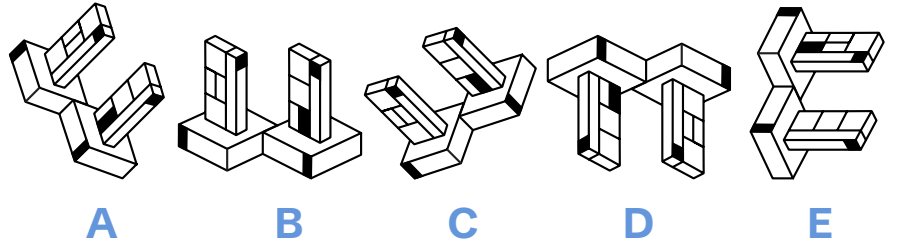
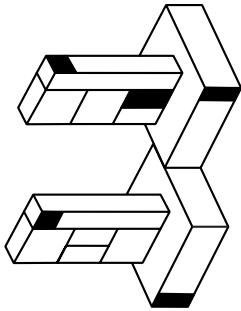
E



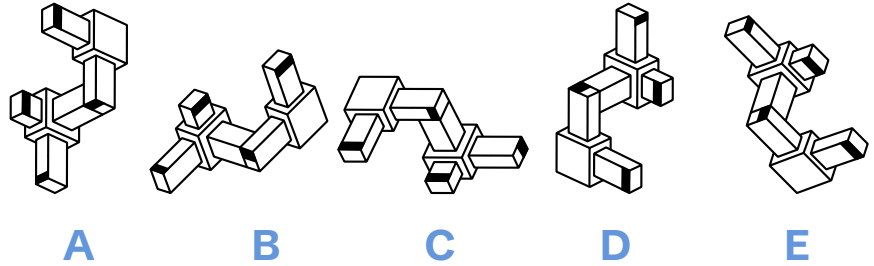
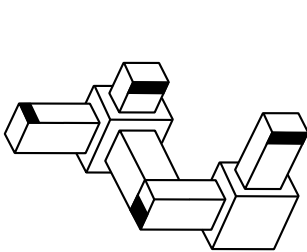
16



17



18



End of Spatial Reasoning Sub-test 3

# 11+ West Midlands Session 2 - Test 3 English

---

## Instructions:

1. Do not turn over this page until instructed to do so.
2. This is a Reading Comprehension test.
3. The test begins with a practice section.
4. The practice section contains one passage with two practice questions.
5. The practice section is followed by the 10 main questions.
6. Total time for the test is 15 minutes.
7. Work quickly and carefully through the questions.
8. If you finish early, go back and check your work.
9. This is a multiple-choice test. Each question carries 1 mark.



## English - Practice Section

### Reading Comprehension

Read this passage carefully, then answer the questions that follow.

## The Colosseum

1. The Colosseum was built between 72 A.D and 80 A.D under the Emperor Vespasian, in the heart of Ancient Rome. Made from stone and concrete, this magnificent monument was built with the man power of tens of thousands of slaves.
5. The Colosseum is the largest amphitheater (meaning “theatre in the round”) in the world! Oval in shape, it measures 189m long, 156m wide and 50m high (about the height of a 12 storey building). This ancient sporting arena could easily fit a modern day football pitch inside!

*Please answer these questions. (Look at the passage again if you need to.) You should choose the **best** answer and mark its letter on your answer sheet.*

**P1**

How does the author characterise the Colosseum in the passage?

- A** As a symbol of Roman oppression
- B** As an impressive and magnificent structure
- C** As a waste of resources and manpower
- D** As a key achievement in Roman architectural history
- E** As a controversial historical site



P2

Which of the following can be inferred about Ancient Rome based on the passage?

Choose TWO.

- 1 It had advanced engineering capabilities
- 2 Entertainment and sporting events were culturally significant
- 3 Its buildings were primarily constructed from wood
- 4 Its population was smaller compared to many modern cities
- 5 Its economy relied heavily on slave labour

- A** 1 and 2
- B** 1 and 5
- C** 2 and 3
- D** 3 and 4
- E** 4 and 5

**This is the end of the English practice section.**



## English

*This section is **marked**.*

### **Reading Comprehension**

*Read this passage carefully, then answer the questions that follow.*

### **Meet Woody - the dog helping to save puffins**

*This article describes the unusual role of Woody, a Fox Red Labrador who helps to protect puffins on the island of Rathlin.*

1. Meet Woody, a dog with a very important job.

The two-year-old Fox Red Labrador is part of a special project called LIFE Raft, which aims to help protect seabirds, like puffins, from invasive predators on Rathlin, an island off the coast of Northern Ireland. Woody works as a detection dog, which

5. means he has been given special training to search for certain things using his powerful sense of smell.

His job is to help his handler, Ulf Keller, to find and locate areas where wild rats and ferrets are by sniffing out their poop.

10. Ferrets and rats are a threat to puffins and other seabirds who live and breed on Rathlin Island every year in their thousands. The predators eat young birds and eggs, and scare the birds away from their nesting grounds.

Conservationists were worried that if left unchecked, this could have a negative impact on the populations of the seabirds, which are already struggling to keep up with the effects of climate change. Last year just one in three puffin chicks, or

15. pufflings, survived, with the predators playing a role. Ferrets were introduced to the island of Rathlin by a farmer in the 1980s as a way to help control the rabbit population - but they soon started breeding and turned their attention to the seabirds.



20. Since the new scheme has begun, with Woody's help, around 98 ferrets have been captured and removed, with no new confirmed sightings on the island for months.

Work has now begun to try to control the population of around 10,000 rats on Rathlin.

Speaking about Woody, his Handler Ulf said he "is a big goof".

25. "He works for us as a detection dog. When he works he's really focused and works really well but when he's off work he's a two-year-old Labrador, full of beans, jumping around," he said.

Woody wears special goggles to protect his eyes from spiky bushes like brambles and thistles.

30. "He's treated like any other member of staff with his PPE and breaks," Ulf said. "He enjoys working, I enjoy working with him. I enjoy the island. I couldn't have it any better, if I'm honest, and I think he likes it, too."

After the project ends in 2026, it is hoped Woody will continue to stick around to help prevent any non-native species returning to the island.



*Please answer these questions. (Look at the passage again if you need to.)  
You should choose the **best** answer and mark its letter on your answer sheet.*

1

**What animal does Woody help protect on Rathlin Island?**

- A Rabbits
- B Puffins
- C Ferrets
- D Rats
- E Seagulls

2

**Which statements about the predator situation on Rathlin Island are supported by the text?**

**Choose TWO.**

- 1 Ferrets were introduced to control rabbits
- 2 Rats are more numerous than ferrets on the island
- 3 All predators will be eliminated by 2026
- 4 About two-thirds of puffin chicks survived last year
- 5 Predators only target puffin eggs

- A 1 and 4
- B 4 and 5
- C 2 and 3
- D 3 and 5
- E 1 and 2

**3**

In the phrase “this could have a negative impact on the populations of the seabirds” (lines 12-13), what part of speech is “negative”?

- A Noun
- B Verb
- C Adjective
- D Adverb
- E Pronoun

**4**

Read the following sentence from the text: “Since the new scheme has begun, with Woody’s help, around 98 ferrets have been captured and removed, with no new confirmed sightings on the island for months” (lines 19-20). What grammatical structure does this sentence use?

- A Simple sentence
- B Compound sentence
- C Complex sentence
- D Compound-complex sentence
- E Fragment

**5**

How many ferrets have been removed from Rathlin Island with Woody’s help?

- A 98
- B 10,000
- C One-third
- D All of them
- E None



**6** In the sentence “After the project ends in 2026, it is hoped Woody will continue to stick around to help prevent any non-native species returning to the island” (lines 32-33), what type of clause is “it is hoped”?

- A Main clause
- B Subordinate clause
- C Relative clause
- D Adverbial clause
- E Passive voice construction

**7** What does the abbreviation “PPE” (line 29) most likely stand for in the context of the passage?

- A Puffin Protection Equipment
- B Personal Protective Equipment
- C Professional Pet Education
- D Project Planning Executive
- E Perfect Performance Evaluation

**8** How is Woody characterised when not working?

- A Serious and focused
- B Tired and lethargic
- C Aggressive and territorial
- D Energetic and playful
- E Shy and nervous



9

Based on the passage, why might goggles be particularly important for Woody's work?

- A To help him see better in the dark
- B To protect him from aggressive predators
- C To make him look more professional
- D To protect his eyes while working in rough terrain
- E To help him identify different species of birds

10

What can be inferred about the relationship between Ulf and Woody?

- A They have a purely professional relationship
- B They frequently disagree about work methods
- C They have a close, positive working partnership
- D Ulf finds Woody difficult to manage
- E Woody was originally trained by someone else

# 11+ West Midlands

## Session 2 - Test 4

### Maths

---

#### Instructions:

1. **Do not turn over this page** until instructed to do so.
2. The test begins with a practice section.
3. The practice section includes 3 questions.
4. The practice section is followed by the main questions.
5. Total time for the test is **15 minutes**.
6. Work quickly and carefully through the questions.
7. If you finish early, go back and check your work.
8. This is a **multiple-choice test**. Each question carries **1 mark**.



## Maths: Practice Section (5 mins)

Try practice questions below. Work out the correct answer and mark it on the answer sheet.

**P1** The sum of two numbers is 84 and their difference is 24.

Find the numbers.

**A**  $x = 58$  and  $y = 26$

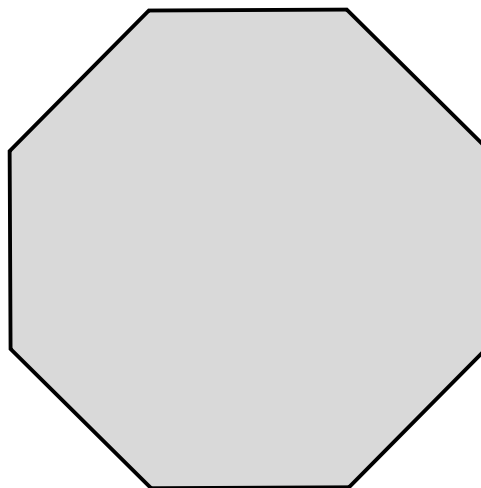
**B**  $x = 42$  and  $y = 42$

**C**  $x = 54$  and  $y = 30$

**D**  $x = 56$  and  $y = 28$

**E**  $x = 52$  and  $y = 32$

**P2** Identify the number of lines of symmetry in this regular octagon.



**A** 4

**B** 5

**C** 6

**D** 7

**E** 8



**P3** 45 pupils were asked if they preferred reading fiction or non-fiction books. 25 of the pupils were boys. 18 boys preferred fiction books. 12 girls preferred non-fiction books.

**How many pupils in total preferred fiction books?**

**A** 30

**B** 33

**C** 26

**D** 31

**E** 29

**This is the end of the Maths practice section.**





## Maths

This section is **marked**.

**1** List these temperatures in order, coldest first.

$1^{\circ}\text{C}$     $-6^{\circ}\text{C}$     $-2^{\circ}\text{C}$     $4^{\circ}\text{C}$     $0^{\circ}\text{C}$     $-4^{\circ}\text{C}$     $2^{\circ}\text{C}$

**A**  $-6^{\circ}\text{C}$ ,  $-4^{\circ}\text{C}$ ,  $-2^{\circ}\text{C}$ ,  $0^{\circ}\text{C}$ ,  $1^{\circ}\text{C}$ ,  $2^{\circ}\text{C}$ ,  $4^{\circ}\text{C}$

**B**  $-6^{\circ}\text{C}$ ,  $-4^{\circ}\text{C}$ ,  $-2^{\circ}\text{C}$ ,  $0^{\circ}\text{C}$ ,  $2^{\circ}\text{C}$ ,  $1^{\circ}\text{C}$ ,  $4^{\circ}\text{C}$

**C**  $-6^{\circ}\text{C}$ ,  $-4^{\circ}\text{C}$ ,  $0^{\circ}\text{C}$ ,  $-2^{\circ}\text{C}$ ,  $1^{\circ}\text{C}$ ,  $2^{\circ}\text{C}$ ,  $4^{\circ}\text{C}$

**D**  $-6^{\circ}\text{C}$ ,  $-2^{\circ}\text{C}$ ,  $-4^{\circ}\text{C}$ ,  $0^{\circ}\text{C}$ ,  $1^{\circ}\text{C}$ ,  $2^{\circ}\text{C}$ ,  $4^{\circ}\text{C}$

**E**  $4^{\circ}\text{C}$ ,  $2^{\circ}\text{C}$ ,  $1^{\circ}\text{C}$ ,  $0^{\circ}\text{C}$ ,  $-2^{\circ}\text{C}$ ,  $-4^{\circ}\text{C}$ ,  $-6^{\circ}\text{C}$

**2** Emma cycles a distance of 15 km in 45 minutes. She rides four times as fast as she cycles.

**How much time will she take to ride a distance of 40 km?**

**A** 25 minutes

**B** 30 minutes

**C** 20 minutes

**D** 15 minutes

**E** 35 minutes



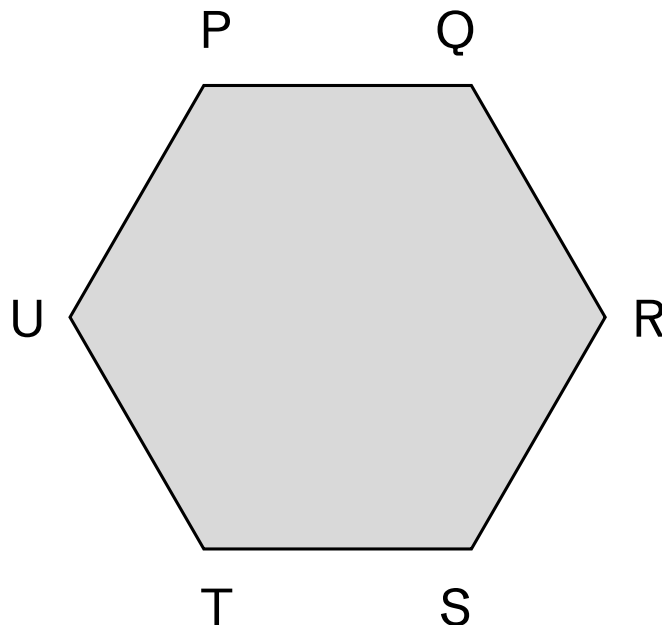
- 3** In a science competition, there are 25 questions in a round. A participant scores: +6 for each correct answer, -2 for each incorrect answer, and -1 for each question left blank.

Oliver takes the competition, answering 18 correctly, 5 incorrectly and leaving 2 blanks

**What is his final score?**

- A** 92      **B** 96      **C** 100      **D** 102      **E** 98

- 4** The shape is turned  $300^\circ$  clockwise, and then  $60^\circ$  anticlockwise.



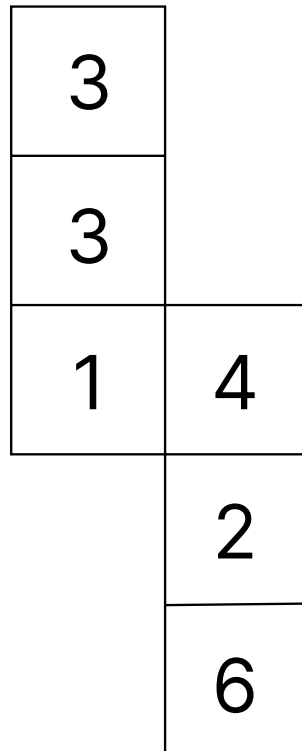
**Find the new position of point P.**

- A** Point R      **B** Point S      **C** Point T      **D** Point U      **E** Point Q



5

Here is a net of a dice:



The dice is tossed once.

**What is the probability of getting 3?**

**A**  $\frac{1}{5}$

**B**  $\frac{2}{5}$

**C**  $\frac{2}{6}$

**D**  $\frac{1}{3}$

**E**  $\frac{1}{2}$



6 If the power of a toy rocket depends on its weight, height and a magic number according to the following formula:

$$\text{Power} = \text{Weight} \times \text{Height} \times \text{Height} \times \text{Magic Number}$$

$$\text{or } P = W \times H \times H \times M$$

Then a large toy rocket of weight 40 g, height 25 cm and magic number 0.2 would have a power of 5000 points because:



$$P = 40 \times 25 \times 25 \times 0.2 = 5000$$

Using this formula,

**Work out the height of a small toy rocket of weight 10 g and magic number 0.2, which has a power of 1800 points.**

- A** 30 cm      **B** 28 cm      **C** 32 cm      **D** 27 cm      **E** 35 cm

7 Sophie recorded the number of apples in her garden. In the pictograph below, one 🍏 represents 15 apples.

Orchard	
Trees	

**How many more apples does she have in the trees than in the orchard?**

- A** 45      **B** 60      **C** 30      **D** 15      **E** 75



8 When Sophie asked her Grandfather how old he was, he answered with a smile,

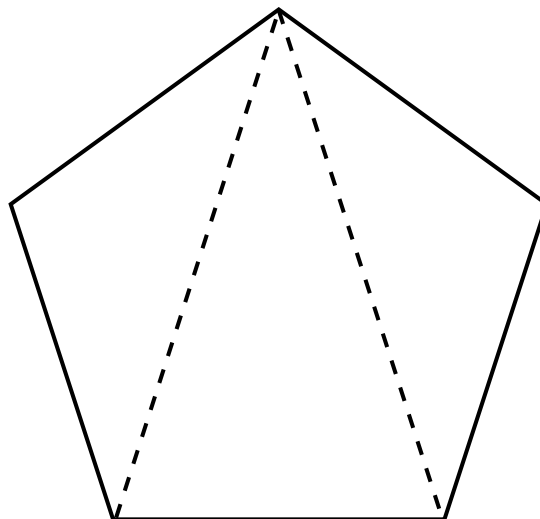
"I am 43 now and will be 42 on my birthday next month."

Sophie looked puzzled so her Grandfather explained, "After turning 50, I decided to count backwards by one year on each birthday."

**How old will her Grandfather actually be on his birthday?**

- A** 58 years old      **B** 57 years old      **C** 56 years old  
**D** 59 years old      **E** 55 years old

9 The angles inside any triangle add up to  $180^\circ$ .  
A pentagon is a shape with five sides. Any pentagon can be split into 3 triangles.



**What do the angles inside a pentagon add up to?**

- A**  $540^\circ$       **B**  $450^\circ$       **C**  $500^\circ$       **D**  $520^\circ$       **E**  $480^\circ$



10

Jamie is preparing a fruit punch using apple juice, orange juice, and water in the ratio of 2 : 3 : 5. Jamie has 240 ml of apple juice available.

**What is the maximum volume of fruit punch that can be made?**

- A** 1200 ml    **B** 1250 ml    **C** 1300 ml    **D** 1350 ml    **E** 1400 ml

11

Peter and Sarah have some stickers. Altogether, they have 20 stickers. Peter has 4 more stickers than Sarah.

**How many stickers does Peter and Sarah each have?**

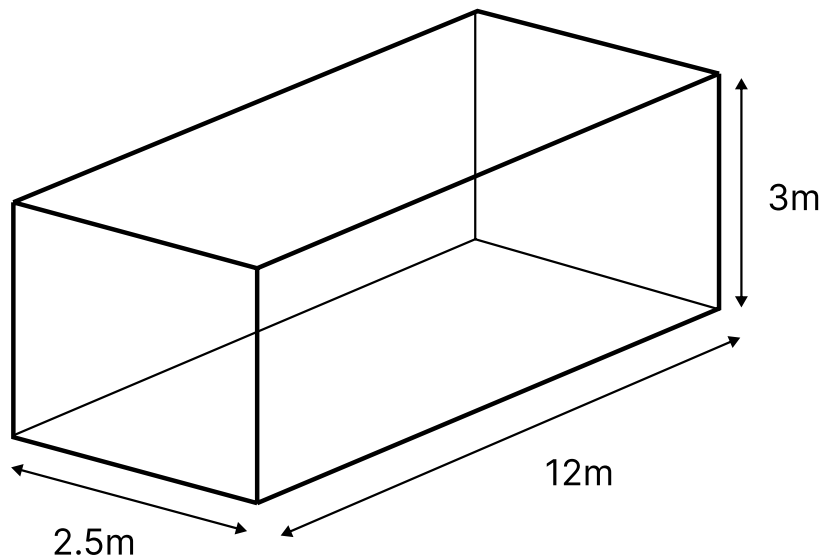
- A** Peter: 11 stickers, Sarah: 8 stickers  
**B** Peter: 14 stickers, Sarah: 10 stickers  
**C** Peter: 12 stickers, Sarah: 8 stickers  
**D** Peter: 11 stickers, Sarah: 9 stickers  
**E** Peter: 10 stickers, Sarah: 6 stickers



12

The diagram shows a rectangular water tank. The water tank is in the shape of a cuboid.

Ahmed is preparing to fill the tank with water. He has containers that can hold a maximum of 750 litres each. Given that  $1 \text{ m}^3 = 1000$  litres.



How many containers does Ahmed need to completely fill the swimming tank?

- A** 120 containers      **B** 100 containers      **C** 110 containers  
**D** 90 containers      **E** 130 containers



© piacademy.co.uk - All rights reserved

Visit [piacademy.co.uk/11-plus-papers](https://piacademy.co.uk/11-plus-papers) to check the 'answers'

---



# West Midlands Paper 3 Session 2

## Answer Marking Sheet

---

Pupil's Name
School Name

DATE OF TEST		
Day	Month	Year

UNIQUE PUPIL NUMBER									

SCHOOL NUMBER					

DATE OF BIRTH		
Day	Month	Year

Please mark boxes with a thin horizontal line like this  .

---



# Test 1 - Verbal Reasoning

## Sub-test 1

**EXAMPLE**

A

B

C

D

E

**P1**

**PRACTICE**

A

B

C

D

E

**1**

A

B

C

D

E

**2**

A

B

C

D

E

**3**

A

B

C

D

E

**4**

A

B

C

D

E

**5**

A

B

C

D

E

## Sub-test 2

**EXAMPLE**

A

B

C

D

E

**P2**

**PRACTICE**

A

B

C

D

E

**6**

A

B

C

D

E

**7**

A

B

C

D

E

**8**

A

B

C

D

E

**9**

A

B

C

D

E

**10**

A

B

C

D

E



## Sub-test 3

**EXAMPLE**

A

B

C

D

E

**P3**

**PRACTICE**

A

B

C

D

E

**11**

A

B

C

D

E

**12**

A

B

C

D

E

**13**

A

B

C

D

E

**14**

A

B

C

D

E

**15**

A

B

C

D

E

## Sub-test 4

**EXAMPLE**

A

B

C

D

E

**P4**

**PRACTICE**

A

B

C

D

E

**16**

A

B

C

D

E

**17**

A

B

C

D

E

**18**

A

B

C

D

E

**19**

A

B

C

D

E

**20**

A

B

C

D

E



# Test 2 - Non Verbal and Spatial Reasoning

## Sub-test 1

**EXAMPLE**

A

B

C

D

E

**P1**

**PRACTICE**

A

B

C

D

E

**1**

A

B

C

D

E

**2**

A

B

C

D

E

**3**

A

B

C

D

E

**4**

A

B

C

D

E

**5**

A

B

C

D

E

**6**

A

B

C

D

E

## Sub-test 2

**EXAMPLE**

A

B

C

D

E

**P2**

**PRACTICE**

A

B

C

D

E

**7**

A

B

C

D

E

**8**

A

B

C

D

E

**9**

A

B

C

D

E

**10**

A

B

C

D

E

**11**

A

B

C

D

E

**12**

A

B

C

D

E



## Sub-test 3

**EXAMPLE**

A

B

C

D

E

**P3**

**PRACTICE**

A

B

C

D

E

**13**

A

B

C

D

E

**14**

A

B

C

D

E

**15**

A

B

C

D

E

**16**

A

B

C

D

E

**17**

A

B

C

D

E

**18**

A

B

C

D

E



# Test 3 - English

**P1**

**PRACTICE**

A	<input type="checkbox"/>
B	<input type="checkbox"/>
C	<input type="checkbox"/>
D	<input type="checkbox"/>
E	<input type="checkbox"/>

**P2**

**PRACTICE**

A	<input type="checkbox"/>
B	<input type="checkbox"/>
C	<input type="checkbox"/>
D	<input type="checkbox"/>
E	<input type="checkbox"/>

**1**

A	<input type="checkbox"/>
B	<input type="checkbox"/>
C	<input type="checkbox"/>
D	<input type="checkbox"/>
E	<input type="checkbox"/>

**2**

A	<input type="checkbox"/>
B	<input type="checkbox"/>
C	<input type="checkbox"/>
D	<input type="checkbox"/>
E	<input type="checkbox"/>

**3**

A	<input type="checkbox"/>
B	<input type="checkbox"/>
C	<input type="checkbox"/>
D	<input type="checkbox"/>
E	<input type="checkbox"/>

**4**

A	<input type="checkbox"/>
B	<input type="checkbox"/>
C	<input type="checkbox"/>
D	<input type="checkbox"/>
E	<input type="checkbox"/>

**5**

A	<input type="checkbox"/>
B	<input type="checkbox"/>
C	<input type="checkbox"/>
D	<input type="checkbox"/>
E	<input type="checkbox"/>

**6**

A	<input type="checkbox"/>
B	<input type="checkbox"/>
C	<input type="checkbox"/>
D	<input type="checkbox"/>
E	<input type="checkbox"/>

**7**

A	<input type="checkbox"/>
B	<input type="checkbox"/>
C	<input type="checkbox"/>
D	<input type="checkbox"/>
E	<input type="checkbox"/>

**8**

A	<input type="checkbox"/>
B	<input type="checkbox"/>
C	<input type="checkbox"/>
D	<input type="checkbox"/>
E	<input type="checkbox"/>

**9**

A	<input type="checkbox"/>
B	<input type="checkbox"/>
C	<input type="checkbox"/>
D	<input type="checkbox"/>
E	<input type="checkbox"/>

**10**

A	<input type="checkbox"/>
B	<input type="checkbox"/>
C	<input type="checkbox"/>
D	<input type="checkbox"/>
E	<input type="checkbox"/>



# Test 4 - Maths

**P1**  
PRACTICE

A	<input type="checkbox"/>
B	<input type="checkbox"/>
C	<input type="checkbox"/>
D	<input type="checkbox"/>
E	<input type="checkbox"/>

**P2**  
PRACTICE

A	<input type="checkbox"/>
B	<input type="checkbox"/>
C	<input type="checkbox"/>
D	<input type="checkbox"/>
E	<input type="checkbox"/>

**P3**  
PRACTICE

A	<input type="checkbox"/>
B	<input type="checkbox"/>
C	<input type="checkbox"/>
D	<input type="checkbox"/>
E	<input type="checkbox"/>

**1**

A	<input type="checkbox"/>
B	<input type="checkbox"/>
C	<input type="checkbox"/>
D	<input type="checkbox"/>
E	<input type="checkbox"/>

**2**

A	<input type="checkbox"/>
B	<input type="checkbox"/>
C	<input type="checkbox"/>
D	<input type="checkbox"/>
E	<input type="checkbox"/>

**3**

A	<input type="checkbox"/>
B	<input type="checkbox"/>
C	<input type="checkbox"/>
D	<input type="checkbox"/>
E	<input type="checkbox"/>

**4**

A	<input type="checkbox"/>
B	<input type="checkbox"/>
C	<input type="checkbox"/>
D	<input type="checkbox"/>
E	<input type="checkbox"/>

**5**

A	<input type="checkbox"/>
B	<input type="checkbox"/>
C	<input type="checkbox"/>
D	<input type="checkbox"/>
E	<input type="checkbox"/>

**6**

A	<input type="checkbox"/>
B	<input type="checkbox"/>
C	<input type="checkbox"/>
D	<input type="checkbox"/>
E	<input type="checkbox"/>

**7**

A	<input type="checkbox"/>
B	<input type="checkbox"/>
C	<input type="checkbox"/>
D	<input type="checkbox"/>
E	<input type="checkbox"/>

**8**

A	<input type="checkbox"/>
B	<input type="checkbox"/>
C	<input type="checkbox"/>
D	<input type="checkbox"/>
E	<input type="checkbox"/>

**9**

A	<input type="checkbox"/>
B	<input type="checkbox"/>
C	<input type="checkbox"/>
D	<input type="checkbox"/>
E	<input type="checkbox"/>

**10**

A	<input type="checkbox"/>
B	<input type="checkbox"/>
C	<input type="checkbox"/>
D	<input type="checkbox"/>
E	<input type="checkbox"/>

**11**

A	<input type="checkbox"/>
B	<input type="checkbox"/>
C	<input type="checkbox"/>
D	<input type="checkbox"/>
E	<input type="checkbox"/>

**12**

A	<input type="checkbox"/>
B	<input type="checkbox"/>
C	<input type="checkbox"/>
D	<input type="checkbox"/>
E	<input type="checkbox"/>

For Parents use only

Marks Scored: ..... Time taken: .....

Comments .....

.....

.....

.....



© piacademy.co.uk - All rights reserved

Visit [piacademy.co.uk/11-plus-papers](http://piacademy.co.uk/11-plus-papers) to check the 'answers'