

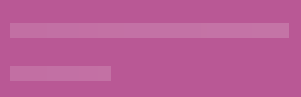
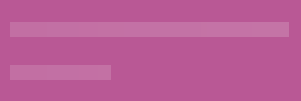
11+ Kent VR, NVR & Spatial Reasoning Tests

☒ 4 Full-Length papers

☒ 600+ Questions

☒ Detailed Answers


☒ Topic-wise Exercises



11+ Kent

Paper 1 - Session 1

Instructions:

1. Do not turn over this page until instructed to do so.
2. This paper contains **three tests**:
 - Test 1: **Verbal Reasoning (VR)**
 - Test 2: **Non-Verbal Reasoning (NVR)**
 - Test 3: **Spatial Reasoning**
3. Each test contains specific instructions. Read them carefully before starting.
4. Listen carefully to the **instructions read out by the invigilator**. They will guide you through the test process.
5. Check that your **name** and **date of birth** are correctly shown on the answer sheet.
6. In the answer sheet, **mark** the correct answer by **drawing a line with your pencil** through the small rectangular box beside it like this. 
7. You must make sure that you **mark your answer in the box** that has the **same question number** as the question you are doing in the paper.
8. If you make a mistake, rub out your mark as well as you can and mark your new answer.
9. The answer sheet will be marked by a computer.
10. You may **do any rough work** on the **question paper**.
11. This is a **multiple-choice test**. Each question carries **1 mark**.
12. At the bottom of each page in the paper are instructions mentioned below telling you:

to stop

Do not turn the page until told to do so 

to go on

Please go on to the next page >>>

or whether you have reached the end of the section/test.

END OF REASONING TEST

11+ Kent

Paper 1 - Test 1

Verbal Reasoning

Instructions:

1. Do not turn over this page until instructed to do so.
2. There are two timed sections: **practice and main section**.
3. The test begins with a **10-minute** practice section.
4. The practice section includes **15 questions**.
 - The **first question** for each question type is solved with a detailed solution.
 - The remaining questions are for you to attempt.
5. The practice section is followed by the main questions.
6. Total time for the main questions is **20 minutes**.
7. Work quickly and carefully through the questions.
8. If you finish early, go back and check your work.
9. This is a **multiple-choice test**. Each question carries **1 mark**.



Verbal Reasoning: Practice Section (10 mins)

In these questions, you are given a sequence of numbers that follow a particular pattern. Find the number that logically continues the sequence.

Example

3 6 9 12 15 [?]

A 18 **B** 17 **C** 16 **D** 19 **E** 20

*The answer is **A** as in this series, you add **3 each time**. The next number is $15 + 3 = \mathbf{18}$. Series can follow different operations (+, -, ×, ÷) or have alternating patterns (e.g., one sequence for odd positions, another for even).*

Now try the practice questions below. Work out the correct answer and mark it on the answer sheet.

1

4 8 12 16 [?]

A 18 **B** 20 **C** 22 **D** 24 **E** 26

2

5 10 20 40 [?]

A 60 **B** 70 **C** 80 **D** 90 **E** 100



In these questions, find the number that will complete the sum correctly. The only operations that will be used are multiply, divide, add, and subtract.

Example

$$12 \times 3 + 4 = 27 \div 3 + 21 + [?]$$

A 15 B 10 C 20 D 5 E 25

*The answer is **10**. The sum on the left is $12 \times 3 + 4 = 40$. The right-hand side must also equal **40**. Since $27 \div 3 + 21 = 30$, adding **10** balances both sides. Thus, the missing number is **10**.*

Now try the practice questions below. Work out the correct answer and mark it on the answer sheet.

3

$$28 \div 7 \times 6 - 5 = 24 - 8 + [?]$$

A 1 B 2 C 3 D 4 E 5

4

$$24 \div 3 + 12 \times 2 = 4 \times 5 + 6 \times [?]$$

A 0 B 2 C 3 D 4 E 6



In these questions, find the two words, one from each group, that are most opposite in meaning.

Example

(static hurl energy) (stationary mobile exercise)

- A** static mobile **B** hurl exercise **C** energy stationary
D static stationary **E** hurl mobile

The answer is **static mobile**. The word '**static**' means **lacking movement**, while '**mobile**' means **able to move**, making them most opposite in meaning.

Now try the practice questions below. Work out the correct answer and mark it on the answer sheet.

5 (shy outgoing reserved) (bold timid confident)

- A** shy bold **B** outgoing timid **C** reserved timid
D shy timid **E** outgoing bold

6 (ancient sprint table) (modern walk chair)

- A** ancient modern **B** sprint walk **C** table chair
D ancient walk **E** table modern



In these questions, find two words, one from each group, that are closest in meaning.

Example

(beat emotion shy) (swallow bashful contend)

- A** beat swallow **B** beat bashful **C** emotion swallow
D shy bashful **E** emotion contend

*The answer is **shy bashful**. The word 'shy' means **timid** or **reserved**, while 'bashful' means **easily embarrassed**, making them closest in meaning.*

Now try the practice questions below. Work out the correct answer and mark it on the answer sheet.

7 (despair delight destruction) (happiness ruin joy)

- A** despair happiness **B** delight ruin **C** destruction ruin
D delight joy **E** despair ruin

8 (abrupt hasty deliberate) (calm sudden thought-out)

- A** abrupt calm **B** hasty sudden **C** deliberate thought-out
D abrupt sudden **E** deliberate calm



In these questions, letters represent numbers. Work out the answer to the sum, then find its corresponding letter.

Example

If $A = 4$, $B = 6$, $C = 7$, $D = 30$, $E = 13$,
then $C + A + E + B = [?]$

A A

B B

C C

D D

E E

The answer is **D**. The numbers corresponding to the letters are $A = 4$, $B = 6$, $C = 7$, and $E = 13$. Adding them gives $7 + 4 + 13 + 6 = \mathbf{30}$. and **D = 30**.

Now try the practice questions below. Work out the correct answer and mark it on the answer sheet.

9

If $A = 24$, $B = 6$, $C = 4$, $D = 2$, $E = 12$,
then $A \div B \times C + D - E = [?]$

A A

B B

C C

D D

E E

10

If $A = 15$, $B = 3$, $C = 45$, $D = 30$, $E = 2$,
then $A \times B + C \div B - D \div E = [?]$

A A

B B

C C

D D

E E



In these questions, find the number that completes the final set of numbers in the same way as the first two sets.

Example

33 [22] 11 49 [24] 25 23 [?] 19

A 8 **B** 16 **C** 4 **D** 1 **E** 20

*The answer is **4**. In each set, the **third number** is **subtracted** from the **first** to get the **middle number**: $33 - 11 = 22$, $49 - 25 = 24$, so $23 - 19 = 4$.*

Now try the practice questions below. Work out the correct answer and mark it on the answer sheet.

11

14 [56] 4 21 [105] 5 18 [?] 6

A 118 **B** 78 **C** 88 **D** 98 **E** 108

12

11 [7] 4 19 [15] 4 22 [?] 4

A 18 **B** 28 **C** 88 **D** 98 **E** 108



In these questions, the given words can be rearranged to form a meaningful sentence. Label each word with a number to indicate its correct position, starting with 1 for the first word. Only one of the five answer choices correctly represents this order.

Example

away put clothes now your

A 4, 5, 2, 3, 1

B 4, 2, 5, 3, 1

C 1, 2, 5, 3, 4

D 2, 4, 5, 3, 1

E 4, 5, 2, 1, 3

*The answer is **4, 2, 5, 3, 1**. The correct sentence formed by rearranging the words is: **Now put your clothes away**. The numbers represent the correct order of words in the sentence.*

*Where **4 → Now, 2 → put, 5 → your, 3 → clothes, and 1 → away**. By checking all answer choices, only 4, 2, 5, 3, 1 follows this order correctly, making it the correct answer.*

Now try the practice questions below. Work out the correct answer and mark it on the answer sheet.

13

computer my is broken completely

A 2, 1, 3, 4, 5

B 1, 2, 3, 4, 5

C 2, 1, 4, 3, 5

D 1, 2, 4, 3, 5

E 2, 1, 3, 5, 4



14

grows tree the tall very

A 3, 2, 1, 4, 5

B 2, 3, 1, 4, 5

C 3, 2, 4, 1, 5

D 2, 3, 4, 1, 5

E 3, 2, 1, 5, 4



In these questions, find the three letters that complete each of the given words. Each word has a separate set of three missing letters. Select the option where both sets correctly complete the words.

Example

Vic ____ ious Def ____ ed

- | | | | | |
|-----------------------------|-----------------------------|-----------------------------|-----------------------------|-----------------------------|
| A t, r, o
a, e, t | B t, o, r
e, a, t | C t, o, r
e, t, a | D r, o, t
a, e, t | E o, t, r
t, e, a |
|-----------------------------|-----------------------------|-----------------------------|-----------------------------|-----------------------------|

*The answer is **t, o, r** and **e, a, t**. The words completed using these letters are **Victorious** and **Defeated**. The missing letters fit as follows: Vic t o r ious and Def e a t ed Checking all answer choices, only t, o, r for the first word and e, a, t for the second word correctly complete both words, making it the correct answer.*

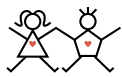
Now try the practice question below. Work out the correct answer and mark it on the answer sheet.

15

J ____ ul Mi ____ able

- | | | | | |
|-----------------------------|-----------------------------|-----------------------------|-----------------------------|-----------------------------|
| A y, f, o
s, e, r | B o, y, f
s, e, r | C o, l, f
r, e, s | D f, y, o
e, r, s | E o, f, y
e, r, s |
|-----------------------------|-----------------------------|-----------------------------|-----------------------------|-----------------------------|





Verbal Reasoning

You have **20 minutes** to complete these **32 questions**.

This section is **marked**.

In these questions, you are given a sequence of numbers that follow a particular pattern. Find the number that logically continues the sequence and mark the correct answer on the answer sheet.

1

120 125 129 132 134 [?]

A 130

B 133

C 134

D 136

E 135

2

18 15 12 9 [?]

A 3

B 5

C 6

D 7

E 9

3

1 2 4 8 16 [?]

A 24

B 30

C 32

D 64

E 18

4

50 45 35 20 [?]

A -5

B 0

C 5

D 10

E 20



In these questions, find the number that will complete the sum correctly. The only operations that will be used are multiply, divide, add, and subtract and mark the correct answer on the answer sheet.

5

$$9 \times 3 + 12 \div 4 = 18 + 6 \times [?]$$

A 1**B 2****C 3****D 4****E 5****6**

$$20 + 6 \div 2 \times 3 = 2 + 9 \times [?]$$

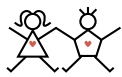
A 2**B 5****C 4****D 3****E 6****7**

$$8 \times 5 - 4 \div 2 = 40 - 2 + [?]$$

A -2**B 0****C 2****D 5****E 10****8**

$$60 \div 6 + 5 \times 8 = 20 + 40 - [?]$$

A 5**B 15****C 10****D 20****E 25**



In these questions, find the two words, one from each group, that are most opposite in meaning and mark the correct answer on the answer sheet.

9 (victory setback triumph) (loss achievement growth)

- A** victory growth **B** setback loss **C** triumph achievement
D victory loss **E** victory achievement

10 (generous arrogant humble) (selfish modest boastful)

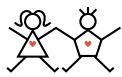
- A** generous selfish **B** arrogant modest **C** humble boastful
D arrogant selfish **E** humble modest

11 (increase grow shrink) (decrease expand multiply)

- A** expand decrease **B** shrink multiply **C** increase multiply
D increase decrease **E** shrink decrease

12 (joy sadness anger) (delight sorrow excitement)

- A** joy excitement **B** anger delight **C** anger sorrow
D joy sorrow **E** sadness excitement



In these questions, find the two words, one from each group, that are closest in meaning and mark the correct answer on the answer sheet.

13

(vegetation plant growth) (lush thriving green)

- A** plant thriving **B** vegetation green **C** growth lush
D vegetation thriving **E** plant lush

14

(truthful deceitful cunning) (honest sly reliable)

- A** deceitful sly **B** truthful honest **C** cunning reliable
D truthful reliable **E** deceitful honest

15

(vital optional crucial) (important unnecessary trivial)

- A** optional trivial **B** vital unnecessary **C** vital important
D crucial trivial **E** optional unnecessary

16

(frozen icy fluid) (warm solid frigid)

- A** icy warm **B** frozen frigid **C** fluid solid
D frozen warm **E** icy solid



In these questions, letters represent numbers. Work out the answer to the sum, then find its corresponding letter and mark the correct answer on the answer sheet.

17

If $A = 16$, $B = 256$, $C = 2$, $D = 64$, $E = 4$,
then $B \div A \times C - D \div E = [?]$

A A**B B****C C****D D****E E****18**

If $A = 53$, $B = 8$, $C = 3$, $D = 7$, $E = 10$,
then $A + D - D \times B + C = [?]$

A A**B B****C C****D D****E E****19**

If $A = 2$, $B = 11$, $C = 6$, $D = 12$, $E = 144$,
then $E \div D + C \times B \times A = [?]$

A A**B B****C C****D D****E E****20**

If $A = 20$, $B = 5$, $C = 10$, $D = 2$, $E = 12$,
then $A \div B + C - D = [?]$

A A**B B****C C****D D****E E**



In these questions, find the number that completes the final set of numbers in the same way as the first two sets and mark the correct answer on the answer sheet

21

4 [24] 5 6 [42] 6 8 [?] 2

A 20 **B** 24 **C** 28 **D** 26 **E** 30**22**

9 [2] 5 4 [1] 2 10 [?] 4

A 2 **B** 3 **C** 4 **D** 5 **E** 6**23**

5 [45] 9 7 [63] 9 9 [?] 9

A 81 **B** 90 **C** 72 **D** 85 **E** 78**24**

3 [15] 6 5 [25] 6 7 [?] 3

A 11 **B** 14 **C** 17 **D** 10 **E** 13



In these questions, the words in a sentence are jumbled up. Label each word with a number to show the correct order of the sentence, starting with 1. Find the correct order and mark the correct answer on the answer sheet.

25

wake I up early always

A 1, 2, 3, 4, 5**B** 2, 5, 1, 3, 4**C** 3, 1, 2, 4, 5**D** 2, 1, 5, 3, 4**E** 5, 2, 1, 3, 4**26**

eat breakfast I every day

A 3, 1, 4, 2, 5**B** 3, 1, 2, 4, 5**C** 1, 3, 2, 4, 5**D** 3, 2, 1, 4, 5**E** 3, 4, 1, 2, 5**27**

walk school I to daily

A 1, 3, 4, 2, 5**B** 3, 1, 2, 4, 5**C** 3, 1, 4, 2, 5**D** 3, 4, 1, 2, 5**E** 1, 4, 3, 2, 5**28**

begins school my at eight

A 3, 1, 2, 4, 5**B** 3, 2, 1, 4, 5**C** 2, 3, 1, 4, 5**D** 3, 2, 4, 1, 5**E** 1, 3, 2, 4, 5



In these questions, find the three letters that complete each of the given words. Each word has a separate set of three missing letters. Select the option where both sets correctly complete the words and mark the correct answer on the answer sheet.

29

Con _ _ _ ent Tim _ _ _ us

- | | | | | |
|-----------------------------|-----------------------------|-----------------------------|-----------------------------|-----------------------------|
| A f, i, d
o, r, o | B d, i, f
a, e, l | C i, f, d
l, e, a | D i, f, d
e, a, l | E f, d, i
a, e, l |
|-----------------------------|-----------------------------|-----------------------------|-----------------------------|-----------------------------|

30

Com _ _ _ te Inco _ _ _ ete

- | | | | | |
|-----------------------------|-----------------------------|-----------------------------|-----------------------------|-----------------------------|
| A p, l, e
m, l, p | B l, e, p
m, p, l | C p, l, e
l, p, m | D e, l, p
m, p, l | E p, l, e
m, p, l |
|-----------------------------|-----------------------------|-----------------------------|-----------------------------|-----------------------------|

31

Ki _ _ _ ess Cr _ _ _ t y

- | | | | | |
|-----------------------------|-----------------------------|-----------------------------|-----------------------------|-----------------------------|
| A n, d, i
u, e, l | B d, n, i
u, e, l | C n, d, n
u, e, l | D d, n, i
l, e, u | E i, n, d
l, e, u |
|-----------------------------|-----------------------------|-----------------------------|-----------------------------|-----------------------------|

32

Re _ _ _ ed Str _ _ _ ed

- | | | | | |
|-----------------------------|------------------------------|-----------------------------|-----------------------------|-----------------------------|
| A l, x, a
e, s, s | B l, a, x,
e, s, s | C e, a, x
e, s, s | D l, a, e
e, s, s | E l, x, e
s, s, e |
|-----------------------------|------------------------------|-----------------------------|-----------------------------|-----------------------------|

11+ Kent

Paper 1 - Test 2

Non-Verbal Reasoning

Instructions:

1. Do not turn over this page until instructed to do so.
2. There are **three sub-tests**.
3. Each sub-test begins with an untimed practice section, conducted with the invigilator.
 - The **first question** is solved with a detailed solution.
 - The remaining **three questions** are for you to attempt.
4. Each sub-test has **eight** main questions.
5. Each sub-test is timed individually (**5 minutes** per sub-test).
6. Total time for main questions is **15 minutes**.
7. Work quickly and carefully through the questions.
8. If you finish early, go back and check your work.
9. This is a **multiple-choice test**. Each question carries **1 mark**.

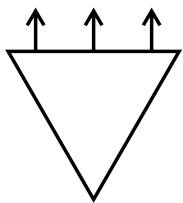
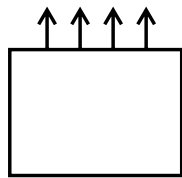
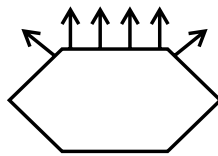
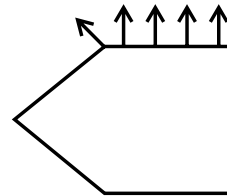
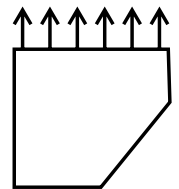


NVR Sub-test 1 Practice Section

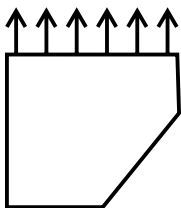
Take as much time as you need to read this example carefully and complete the practice question that follows.

In each of the rows below there are five figures. Find the figure in each row that is most unlike the other four.

Example

**A****B****C****D****E**

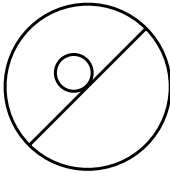
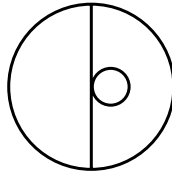
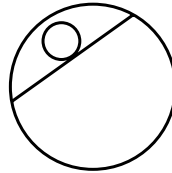
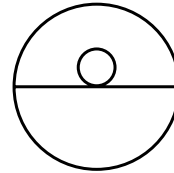
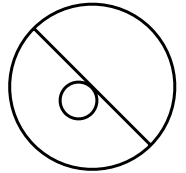
*The correct answer is **E** because in all of the shapes the number of arrows is equal to the number of sides except **E** which has number of arrows more than the number of sides, so **E** is the odd one out.*



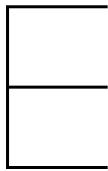
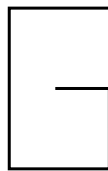
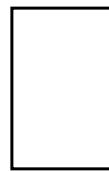
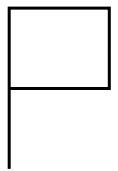


Now try the practice questions below. Work out the correct answer and mark it on the answer sheet.

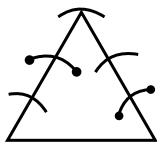
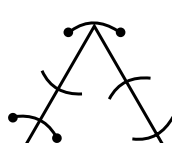
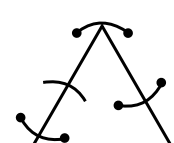
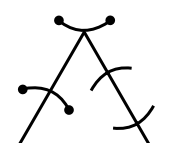
1

**A****B****C****D****E**

2

**A****B****C****D****E**

3

**A****B****C****D****E**

This is the end of NVR Sub-test 1 Practice Section.





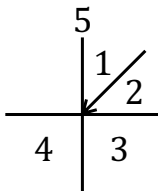
NVR Sub-test 1

You have **5 minutes** to complete these **eight questions**.

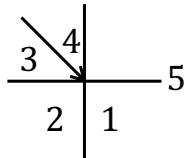
This section is **marked**.

In each of the rows below there are five figures. Find the figure in each row that is most unlike the other four and mark its letter on the answersheet.

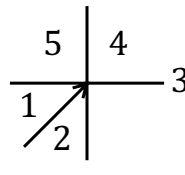
1



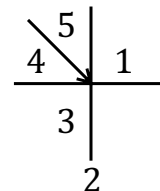
A



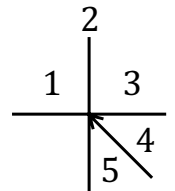
B



C

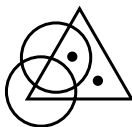


D

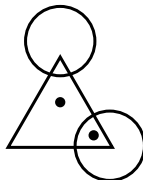


E

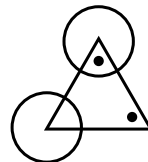
2



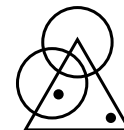
A



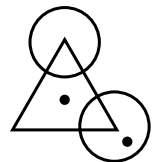
B



C

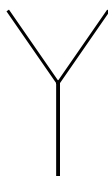


D

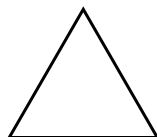


E

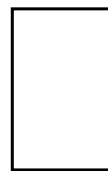
3



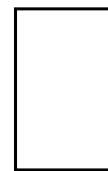
A



B



C



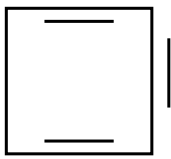
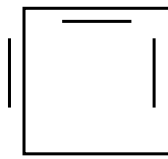
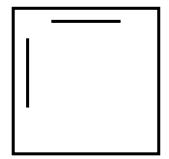
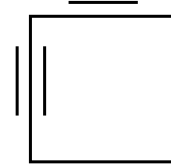
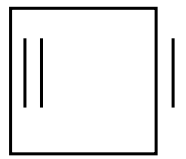
D



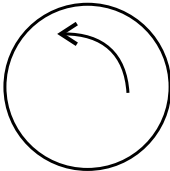
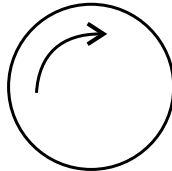
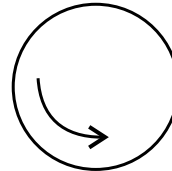
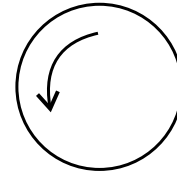
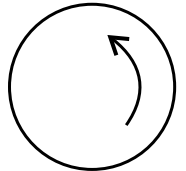
E



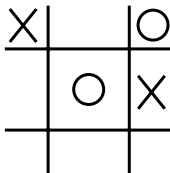
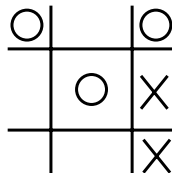
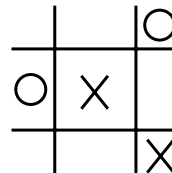
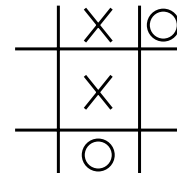
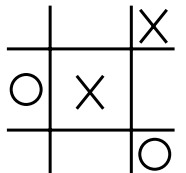
4

**A****B****C****D****E**

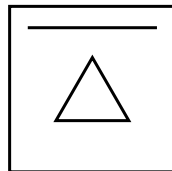
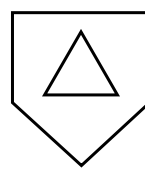
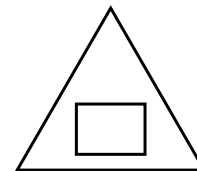
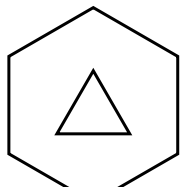
5

**A****B****C****D****E**

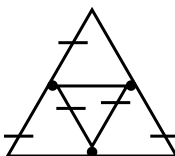
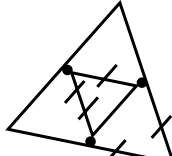
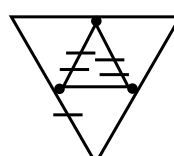
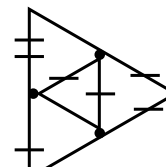
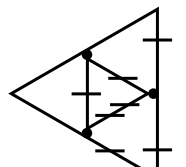
6

**A****B****C****D****E**

7

**A****B****C****D****E**

8

**A****B****C****D****E**

This is the end of NVR Sub-test 1.



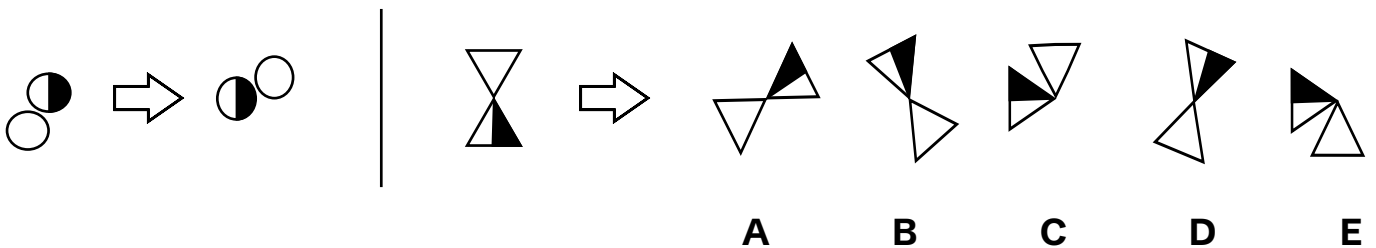


NVR Sub-test 2 Practice Section

Take as much time as you need to read this example carefully and complete the practice question that follows.

On the left, two shapes are shown with an arrow between them, indicating a relationship. A third shape follows, with an arrow and five answer choices. Select the shape that pairs with the third shape in the same way as the first pair.

Example

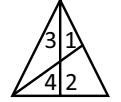
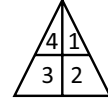
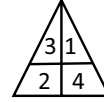
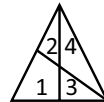
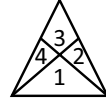
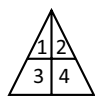
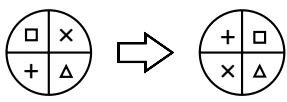


*The correct answer is **D**. In the given transformation, we can see that the upper and lower parts exchange places, while the shaded part remains on the same side. Additionally, the entire shape is slightly rotated to the right. This makes **D** the correct answer.*



Now try the practice questions below. Work out the correct answer and mark it on the answer sheet.

1



A

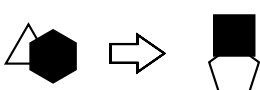
B

C

D

E

2



A

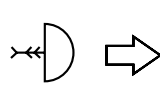
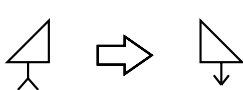
B

C

D

E

3



A

B

C

D

E

This is the end of NVR Sub-test 2 Practice Section.





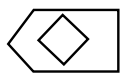
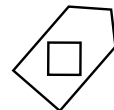
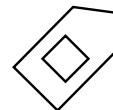
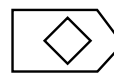
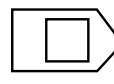
NVR Sub-test 2

You have **5 minutes** to complete these **eight questions**.

This section is **marked**.

On the left, two shapes are shown with an arrow between them, indicating a relationship. A third shape follows, with an arrow and five answer choices. Select the shape that pairs with the third shape in the same way as the first pair and mark its letter on your answer sheet.

9



A

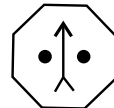
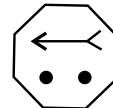
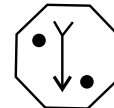
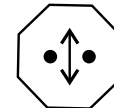
B

C

D

E

10



A

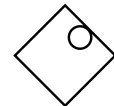
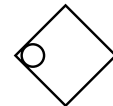
B

C

D

E

11



A

B

C



D

E



Diagram illustrating the transformation of a sequence of arrows into a sequence of dots and arrows. The first part shows a sequence of four arrows (up, down-left, up-right, up) transforming into a sequence of four dots (top-left, top-right, bottom-left, bottom-right). The second part shows a sequence of three arrows (down-left, down-left, up-right) transforming into a sequence of five options (A, B, C, D, E) representing different combinations of dots and arrows.

The image displays a visual logic puzzle. It begins with a sequence of two boxes connected by a right-pointing arrow. The first box contains 6 shapes: 3 triangles and 3 squares. The second box contains 9 shapes: 3 triangles and 6 squares. This indicates a transformation where each original shape is replaced by three identical copies of itself. Following this, a third box contains 8 shapes: 4 triangles and 4 pentagons. An arrow points from this box to a row of five options, labeled A through E. Option A contains 10 shapes (6 triangles, 4 pentagons). Option B contains 8 shapes (4 triangles, 4 pentagons). Option C contains 9 shapes (5 triangles, 4 pentagons). Option D contains 10 shapes (6 triangles, 4 pentagons). Option E contains 10 shapes (6 triangles, 4 inverted triangles, and 4 pentagons).

Please go on to the next page >>>

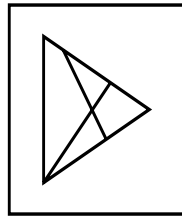
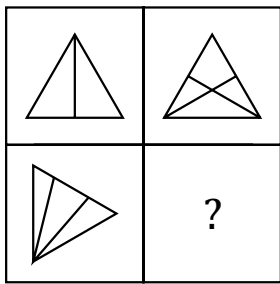
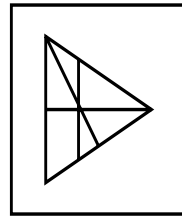
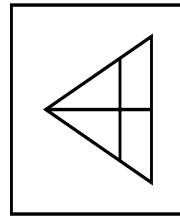
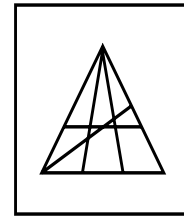
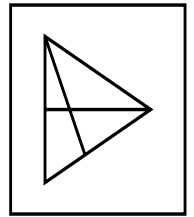


NVR Sub-test 3 Practice Section

Take as much time as you need to read this example carefully and complete the practice question that follows.

On the left, a large square is divided into four smaller squares, with one left empty. The other three contain patterns following a specific rule. From the five answer choices on the right, select the pattern that correctly completes the large square.

Example

**A****B****C****D****E**

The correct answer is **B**.

In each row, the number of parts is doubled in the second figure.

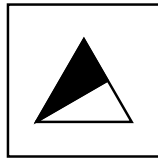
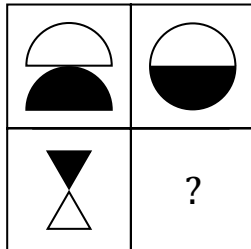
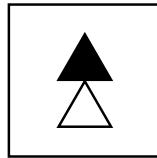
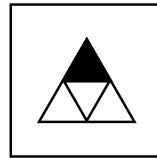
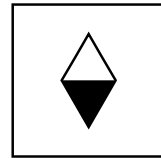
The bottom right box is blank. To complete the pattern in the same way, the missing shape must be a triangle with its internal divisions doubled.

The answer must be **B**.

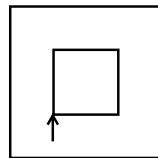
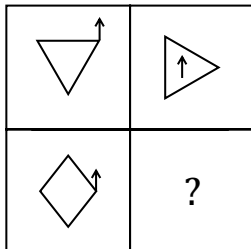
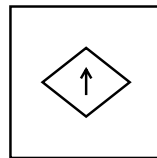
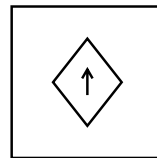
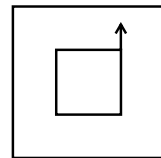
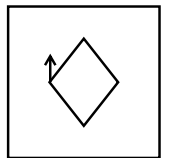


Now try the practice questions below. Work out the correct answer and mark it on the answer sheet.

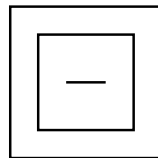
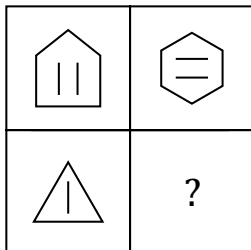
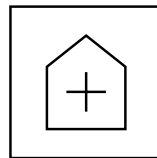
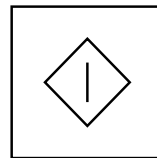
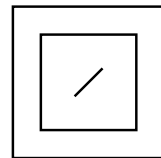
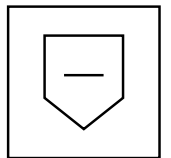
1

**A****B****C****D****E**

2

**A****B****C****D****E**

3

**A****B****C****D****E**

This is the end of NVR Sub-test 3 Practice Section.





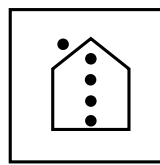
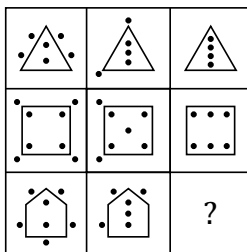
NVR Sub-test 3

You have **5 minutes** to complete these **eight questions**.

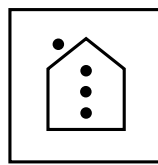
This section is **marked**.

On the left, a large square is divided into four smaller squares, with one left empty. The other three contain patterns following a specific rule. From the five answer choices on the right, select the pattern that correctly completes the large square and mark its letter on your answer sheet.

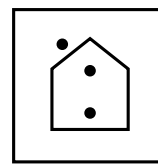
17



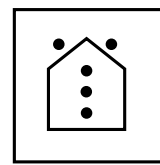
A



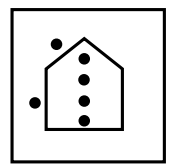
B



C

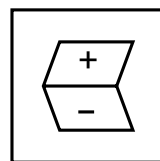
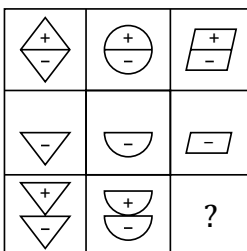


D

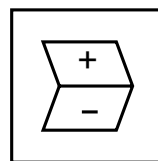


E

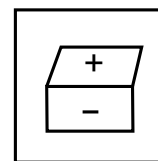
18



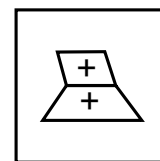
A



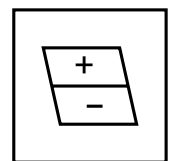
B



C



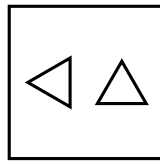
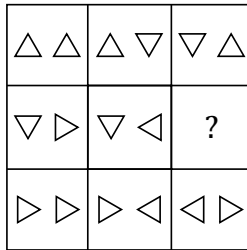
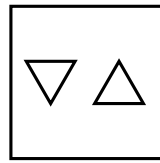
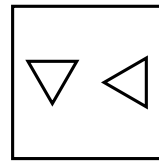
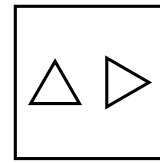
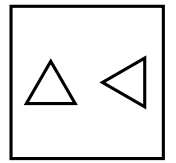
D



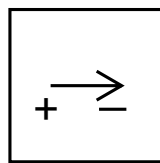
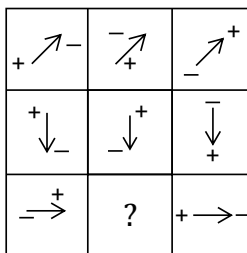
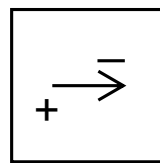
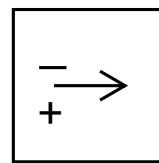
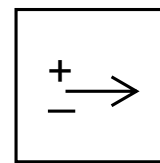
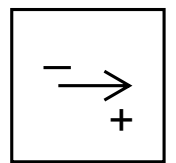
E



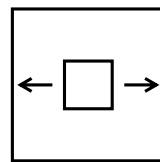
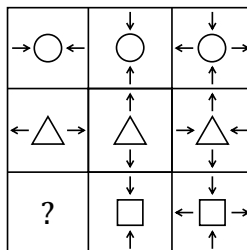
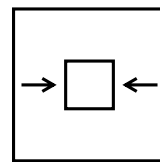
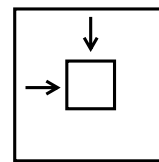
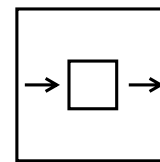
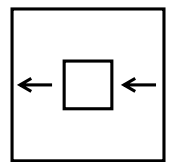
19

**A****B****C****D****E**

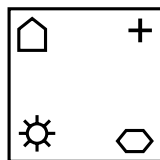
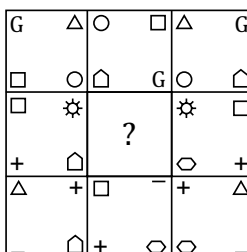
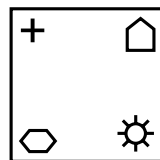
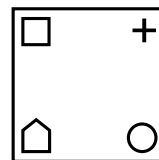
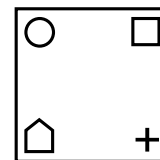
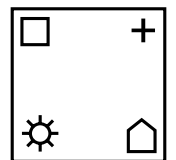
20

**A****B****C****D****E**

21

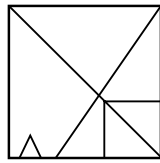
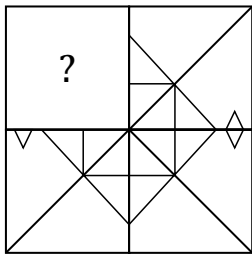
**A****B****C****D****E**

22

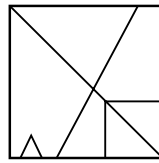
**A****B****C****D****E**



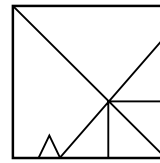
23



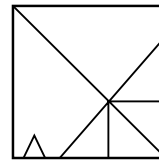
A



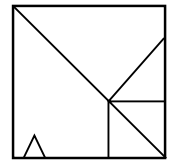
B



C

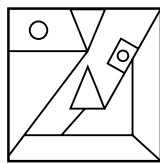
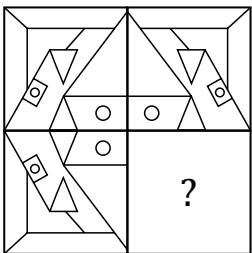


D

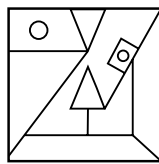


E

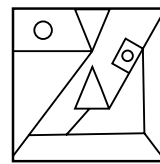
24



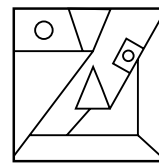
A



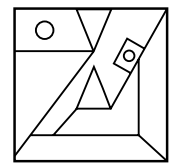
B



C



D



E

This is the end of NVR Sub-test 3.

11+ Kent

Paper 1 – Test 3

Spatial Reasoning

Instructions:

1. Do not turn over this page until instructed to do so.
2. There are **two sub-tests**.
3. Each sub-test begins with an untimed practice section, conducted with the invigilator.
 - The **first question** is solved with a detailed solution.
 - The remaining **three questions** are for you to attempt.
4. Each sub-test has **eight main questions**.
5. Each sub-test is timed individually (**4-5 minutes** per sub-test).
6. Total time for main questions is **10 minutes**.
7. Work quickly and carefully through the questions.
8. If you finish early, go back and check your work.
9. This is a **multiple-choice test**. Each question carries **1 mark**.

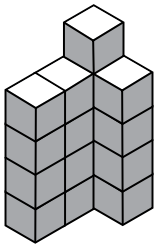


Spatial Reasoning Sub-test 1 Practice Section

Take as much time as you need to read this example carefully and complete the practice question that follows.

A 3D shape made of blocks is shown on the left. Count the total number of blocks in the shape. Choose the correct answer from the five options on the right.

Example



15

17

14

25

11

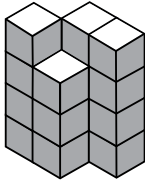
A**B****C****D****E**

*The correct answer is **B**. Seeing from upward there are 3 columns of 4 blocks each and 1 column of 5 blocks. So, the total number of blocks is 17. This makes **B** the correct answer.*



Now try the practice questions below. Work out the correct answer and mark it on the answer sheet.

1



15

11

19

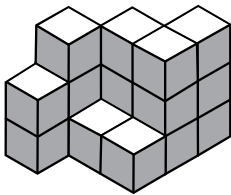
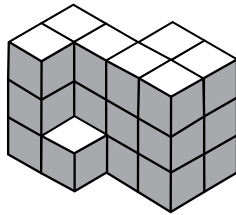
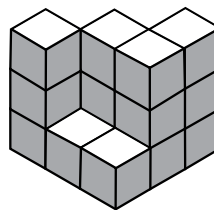
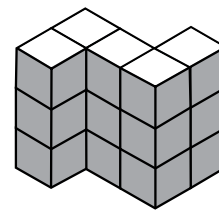
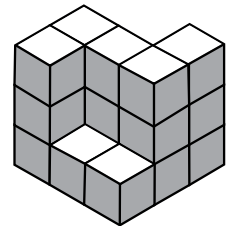
13

21

A**B****C****D****E**

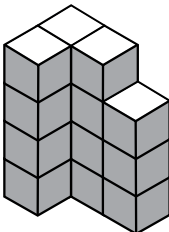
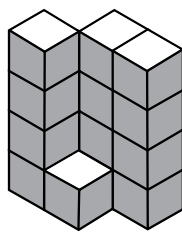
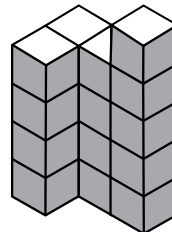
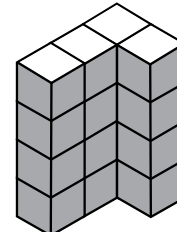
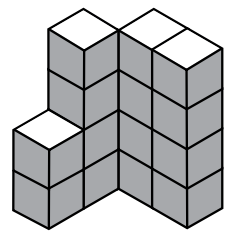
2

In which of the following shapes given in options, the number of blocks is '22'?

**A****B****C****D****E**

3

In which of the following shapes given in options, the number of blocks is '16'?

**A****B****C****D****E**

This is the end of Spatial Reasoning Sub-test 1 Practice section.





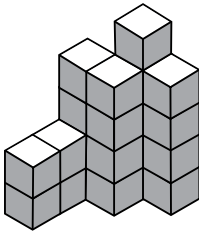
Spatial Reasoning Sub-test 1

You have **5 minutes** to complete these **eight questions**.

This section is **marked**.

A 3D shape made of blocks is shown on the left. Count the total number of blocks in the shape. Choose the correct answer from the five options on the right and mark its letter on your answer sheet.

1



17

21

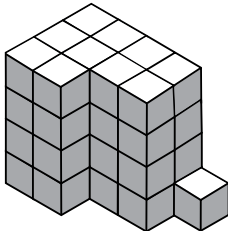
23

15

25

A**B****C****D****E**

2



39

36

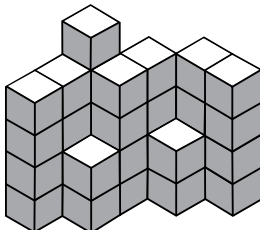
38

41

44

A**B****C****D****E**

3



33

32

30

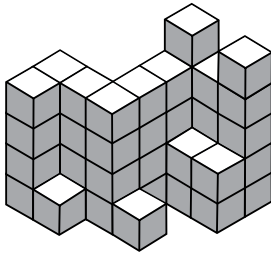
35

29

A**B****C****D****E**



4



43

50

42

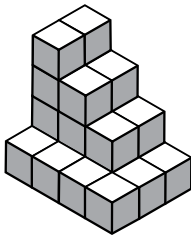
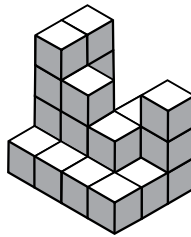
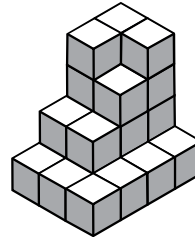
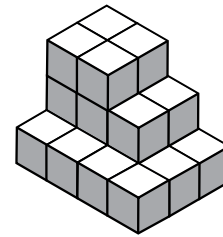
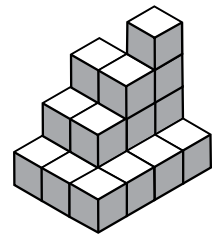
47

44

A**B****C****D****E**

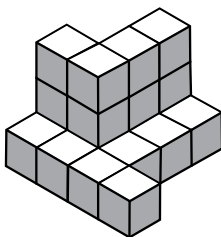
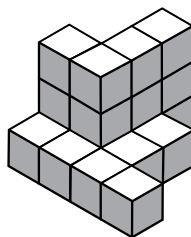
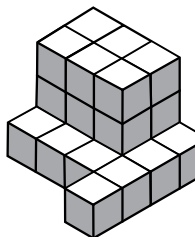
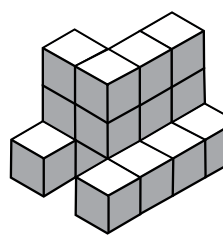
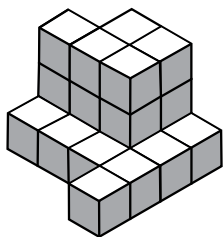
5

In which of the following shapes given in options, the number of blocks is '24'?

**A****B****C****D****E**

6

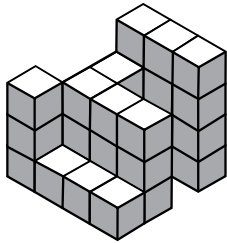
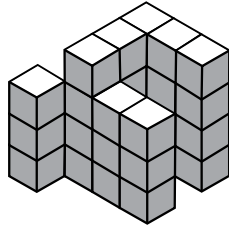
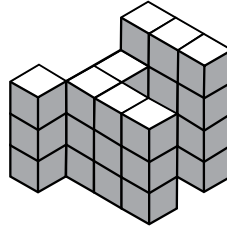
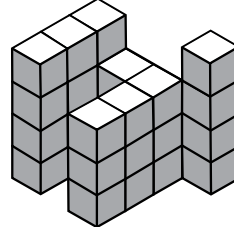
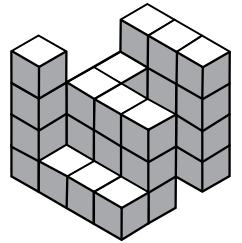
In which of the following shapes given in options, the number of blocks is '19'?

**A****B****C****D****E**



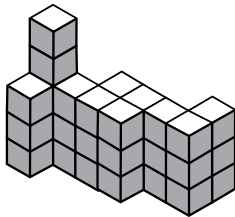
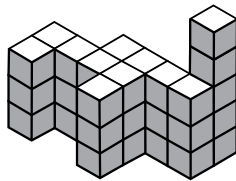
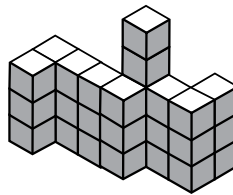
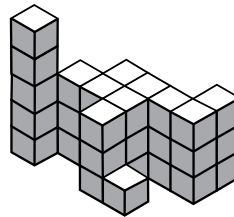
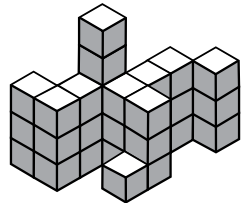
7

In which of the following shapes given in options, the number of blocks is '27'?

**A****B****C****D****E**

8

In which of the following shapes given in options, the number of blocks is '35'?

**A****B****C****D****E**

This is the end of NVR Sub-test 1.

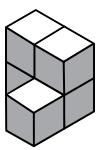


Spatial Reasoning Sub-test 2 Practice Section

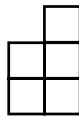
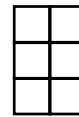
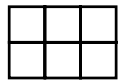
Take as much time as you need to read this example carefully and complete the practice question that follows.

A 3D shape is shown on the left with a marked viewpoint (X). On the right, there are five 2D views. One of them represents the correct front view of the 3D shape when looked at from point X. Identify the correct 2D view.

Example



X

**A****B****C****D****E**

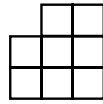
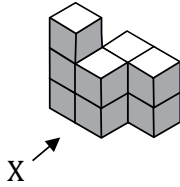
*The correct answer is **A**.*

There should be 3 blocks visible from the front, which rules out options B, D, and E. There should be 2 blocks in the rightmost line, which rules out option C.

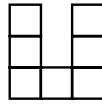


Now try the practice questions below. Work out the correct answer and mark it on the answer sheet.

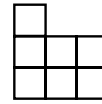
1



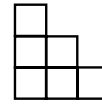
A



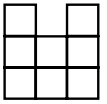
B



C

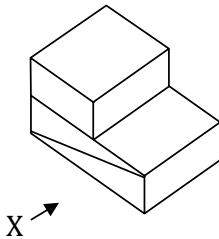


D

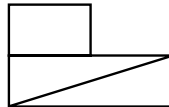


E

2



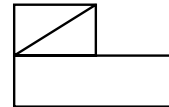
A



B



C

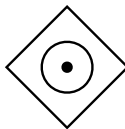
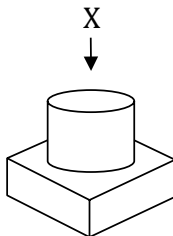


D

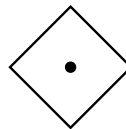


E

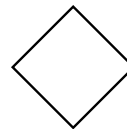
3



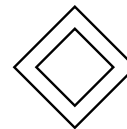
A



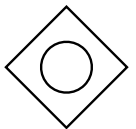
B



C



D



E

This is the end of Spatial Reasoning Sub-test 2 Practice section.





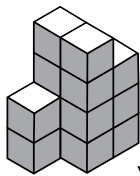
Spatial Reasoning Sub-test 2

You have **5 minutes** to complete these **eight questions**.

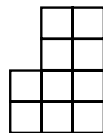
This section is **marked**.

A 3D shape is shown on the left with a marked viewpoint (X). On the right, there are five 2D views. One of them represents the correct front view of the 3D shape when looked at from point X. Identify the correct 2D view and mark its letter on your answer sheet.

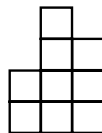
9



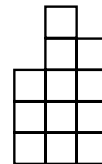
X



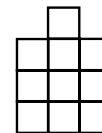
A



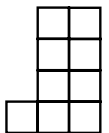
B



C

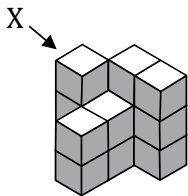


D

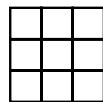


E

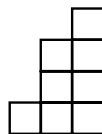
10



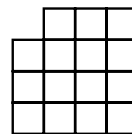
X



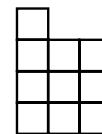
A



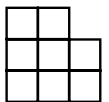
B



C

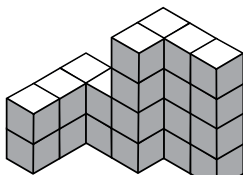


D

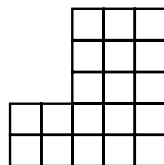


E

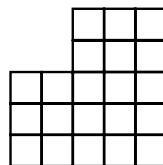
11



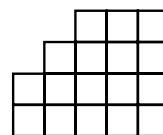
X



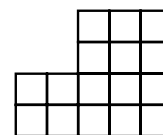
A



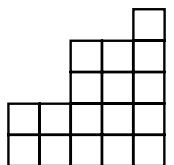
B



C



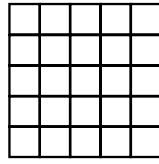
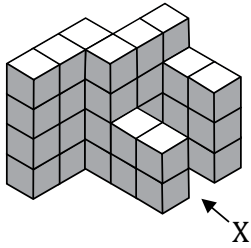
D



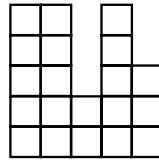
E



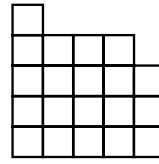
12



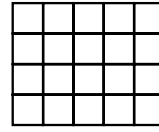
A



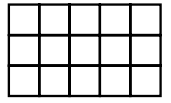
B



C

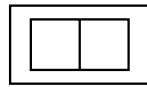
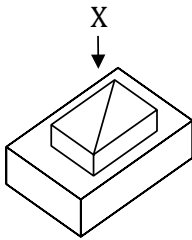


D

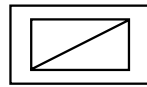


E

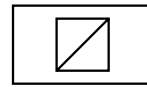
13



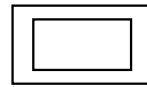
A



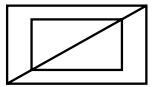
B



C

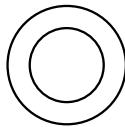
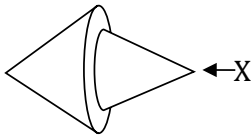


D

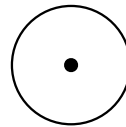


E

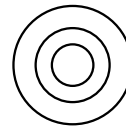
14



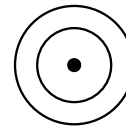
A



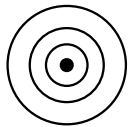
B



C



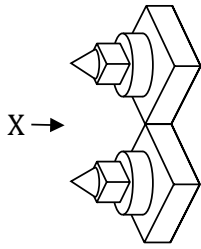
D



E



15



A



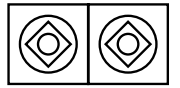
B



C

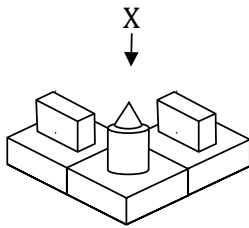


D

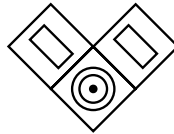


E

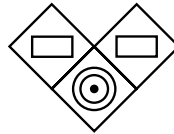
16



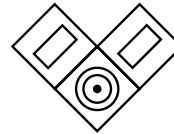
A



B



C



D



E

This is the end of Spatial Reasoning Sub-test 2.



© piacademy.co.uk - All rights reserved

Visit piacademy.co.uk/11-plus-papers to check the 'answers'



Kent Paper 1 Session 1

Answer Marking Sheet

Pupil's Name

School Name

Test Results	
Raw Score	
Standardized Score	
Marker's Initials	
Checker's Initials	

PUPILS REG, NUMBER									
[0]	[0]	[0]	[0]	[0]	[0]	[0]	[0]	[0]	[0]
[1]	[1]	[1]	[1]	[1]	[1]	[1]	[1]	[1]	[1]
[2]	[2]	[2]	[2]	[2]	[2]	[2]	[2]	[2]	[2]
[3]	[3]	[3]	[3]	[3]	[3]	[3]	[3]	[3]	[3]
[4]	[4]	[4]	[4]	[4]	[4]	[4]	[4]	[4]	[4]
[5]	[5]	[5]	[5]	[5]	[5]	[5]	[5]	[5]	[5]
[6]	[6]	[6]	[6]	[6]	[6]	[6]	[6]	[6]	[6]
[7]	[7]	[7]	[7]	[7]	[7]	[7]	[7]	[7]	[7]
[8]	[8]	[8]	[8]	[8]	[8]	[8]	[8]	[8]	[8]
[9]	[9]	[9]	[9]	[9]	[9]	[9]	[9]	[9]	[9]

DATE OF BIRTH			
Day	Month	Year	
[0]	[0]	January	[] 1997 []
[1]	[1]	February	[] 1998 []
[2]	[2]	March	[] 1999 []
[3]	[3]	April	[] 2000 []
[4]	[4]	May	[] 2001 []
[5]	[5]	June	[] 2002 []
[6]	[6]	July	[] 2003 []
[7]	[7]	August	[] 2004 []
[8]	[8]	September	[] 2005 []
[9]	[9]	October	[] 2006 []
		December	[] 2007 []
			[] 2008 []

Please mark boxes with a thin horizontal line like this  .



Test 1 - Verbal Reasoning

Sub-test 1

EXAMPLE	
A	<input checked="" type="checkbox"/>
B	<input type="checkbox"/>
C	<input type="checkbox"/>
D	<input type="checkbox"/>
E	<input type="checkbox"/>

1 PRACTICE	
A	<input type="checkbox"/>
B	<input type="checkbox"/>
C	<input type="checkbox"/>
D	<input type="checkbox"/>
E	<input type="checkbox"/>

2 PRACTICE	
A	<input type="checkbox"/>
B	<input type="checkbox"/>
C	<input type="checkbox"/>
D	<input type="checkbox"/>
E	<input type="checkbox"/>

1	
A	<input type="checkbox"/>
B	<input type="checkbox"/>
C	<input type="checkbox"/>
D	<input type="checkbox"/>
E	<input type="checkbox"/>

2	
A	<input type="checkbox"/>
B	<input type="checkbox"/>
C	<input type="checkbox"/>
D	<input type="checkbox"/>
E	<input type="checkbox"/>

3	
A	<input type="checkbox"/>
B	<input type="checkbox"/>
C	<input type="checkbox"/>
D	<input type="checkbox"/>
E	<input type="checkbox"/>

4	
A	<input type="checkbox"/>
B	<input type="checkbox"/>
C	<input type="checkbox"/>
D	<input type="checkbox"/>
E	<input type="checkbox"/>

Sub-test 2

EXAMPLE	
A	<input type="checkbox"/>
B	<input checked="" type="checkbox"/>
C	<input type="checkbox"/>
D	<input type="checkbox"/>
E	<input type="checkbox"/>

3 PRACTICE	
A	<input type="checkbox"/>
B	<input type="checkbox"/>
C	<input type="checkbox"/>
D	<input type="checkbox"/>
E	<input type="checkbox"/>

4 PRACTICE	
A	<input type="checkbox"/>
B	<input type="checkbox"/>
C	<input type="checkbox"/>
D	<input type="checkbox"/>
E	<input type="checkbox"/>

5	
A	<input type="checkbox"/>
B	<input type="checkbox"/>
C	<input type="checkbox"/>
D	<input type="checkbox"/>
E	<input type="checkbox"/>

6	
A	<input type="checkbox"/>
B	<input type="checkbox"/>
C	<input type="checkbox"/>
D	<input type="checkbox"/>
E	<input type="checkbox"/>

7	
A	<input type="checkbox"/>
B	<input type="checkbox"/>
C	<input type="checkbox"/>
D	<input type="checkbox"/>
E	<input type="checkbox"/>

8	
A	<input type="checkbox"/>
B	<input type="checkbox"/>
C	<input type="checkbox"/>
D	<input type="checkbox"/>
E	<input type="checkbox"/>



Sub-test 3

EXAMPLE

A ☒
B ☐
C ☐
D ☐
E ☐

5

PRACTICE

A ☐
B ☐
C ☐
D ☐
E ☐

6

PRACTICE

A ☐
B ☐
C ☐
D ☐
E ☐

9

A ☐
B ☐
C ☐
D ☐
E ☐

10

A ☐
B ☐
C ☐
D ☐
E ☐

11

A ☐
B ☐
C ☐
D ☐
E ☐

12

A ☐
B ☐
C ☐
D ☐
E ☐

Sub-test 4

EXAMPLE

A ☐
B ☐
C ☐
D ☒
E ☐

7

PRACTICE

A ☐
B ☐
C ☐
D ☐
E ☐

8

PRACTICE

A ☐
B ☐
C ☐
D ☐
E ☐

13

A ☐
B ☐
C ☐
D ☐
E ☐

14

A ☐
B ☐
C ☐
D ☐
E ☐

15

A ☐
B ☐
C ☐
D ☐
E ☐

16

A ☐
B ☐
C ☐
D ☐
E ☐



Sub-test 5

EXAMPLE

A ☐
B ☐
C ☐
D ☒
E ☐

9

PRACTICE

A ☐
B ☐
C ☐
D ☐
E ☐

10

PRACTICE

A ☐
B ☐
C ☐
D ☐
E ☐

17

A ☐
B ☐
C ☐
D ☐
E ☐

18

A ☐
B ☐
C ☐
D ☐
E ☐

19

A ☐
B ☐
C ☐
D ☐
E ☐

20

A ☐
B ☐
C ☐
D ☐
E ☐

Sub-test 6

EXAMPLE

A ☐
B ☐
C ☒
D ☐
E ☐

11

PRACTICE

A ☐
B ☐
C ☐
D ☐
E ☐

12

PRACTICE

A ☐
B ☐
C ☐
D ☐
E ☐

21

A ☐
B ☐
C ☐
D ☐
E ☐

22

A ☐
B ☐
C ☐
D ☐
E ☐

23

A ☐
B ☐
C ☐
D ☐
E ☐

24

A ☐
B ☐
C ☐
D ☐
E ☐



Sub-test 7

EXAMPLE

A ☐
B ☒
C ☐
D ☐
E ☐

13

PRACTICE

A ☐
B ☐
C ☐
D ☐
E ☐

14

PRACTICE

A ☐
B ☐
C ☐
D ☐
E ☐

25

A ☐
B ☐
C ☐
D ☐
E ☐

26

A ☐
B ☐
C ☐
D ☐
E ☐

27

A ☐
B ☐
C ☐
D ☐
E ☐

28

A ☐
B ☐
C ☐
D ☐
E ☐

Sub-test 8

EXAMPLE

A ☐
B ☒
C ☐
D ☐
E ☐

15

PRACTICE

A ☐
B ☐
C ☐
D ☐
E ☐

29

A ☐
B ☐
C ☐
D ☐
E ☐

30

A ☐
B ☐
C ☐
D ☐
E ☐

31

A ☐
B ☐
C ☐
D ☐
E ☐

32

A ☐
B ☐
C ☐
D ☐
E ☐



Test 2 - Non Verbal Reasoning

Sub-test 1

EXAMPLE	
A	<input type="checkbox"/>
B	<input type="checkbox"/>
C	<input type="checkbox"/>
D	<input type="checkbox"/>
E	<input checked="" type="checkbox"/>

1 PRACTICE	
A	<input type="checkbox"/>
B	<input type="checkbox"/>
C	<input type="checkbox"/>
D	<input type="checkbox"/>
E	<input type="checkbox"/>

2 PRACTICE	
A	<input type="checkbox"/>
B	<input type="checkbox"/>
C	<input type="checkbox"/>
D	<input type="checkbox"/>
E	<input type="checkbox"/>

3 PRACTICE	
A	<input type="checkbox"/>
B	<input type="checkbox"/>
C	<input type="checkbox"/>
D	<input type="checkbox"/>
E	<input type="checkbox"/>

1	
A	<input type="checkbox"/>
B	<input type="checkbox"/>
C	<input type="checkbox"/>
D	<input type="checkbox"/>
E	<input type="checkbox"/>

2	
A	<input type="checkbox"/>
B	<input type="checkbox"/>
C	<input type="checkbox"/>
D	<input type="checkbox"/>
E	<input type="checkbox"/>

3	
A	<input type="checkbox"/>
B	<input type="checkbox"/>
C	<input type="checkbox"/>
D	<input type="checkbox"/>
E	<input type="checkbox"/>

4	
A	<input type="checkbox"/>
B	<input type="checkbox"/>
C	<input type="checkbox"/>
D	<input type="checkbox"/>
E	<input type="checkbox"/>

5	
A	<input type="checkbox"/>
B	<input type="checkbox"/>
C	<input type="checkbox"/>
D	<input type="checkbox"/>
E	<input type="checkbox"/>

6	
A	<input type="checkbox"/>
B	<input type="checkbox"/>
C	<input type="checkbox"/>
D	<input type="checkbox"/>
E	<input type="checkbox"/>

7	
A	<input type="checkbox"/>
B	<input type="checkbox"/>
C	<input type="checkbox"/>
D	<input type="checkbox"/>
E	<input type="checkbox"/>

8	
A	<input type="checkbox"/>
B	<input type="checkbox"/>
C	<input type="checkbox"/>
D	<input type="checkbox"/>
E	<input type="checkbox"/>

Sub-test 2

EXAMPLE	
A	<input type="checkbox"/>
B	<input type="checkbox"/>
C	<input type="checkbox"/>
D	<input checked="" type="checkbox"/>
E	<input type="checkbox"/>

1 PRACTICE	
A	<input type="checkbox"/>
B	<input type="checkbox"/>
C	<input type="checkbox"/>
D	<input type="checkbox"/>
E	<input type="checkbox"/>

2 PRACTICE	
A	<input type="checkbox"/>
B	<input type="checkbox"/>
C	<input type="checkbox"/>
D	<input type="checkbox"/>
E	<input type="checkbox"/>

3 PRACTICE	
A	<input type="checkbox"/>
B	<input type="checkbox"/>
C	<input type="checkbox"/>
D	<input type="checkbox"/>
E	<input type="checkbox"/>



9

A	<input type="text"/>
B	<input type="text"/>
C	<input type="text"/>
D	<input type="text"/>
E	<input type="text"/>

10

A	<input type="text"/>
B	<input type="text"/>
C	<input type="text"/>
D	<input type="text"/>
E	<input type="text"/>

11

A	<input type="text"/>
B	<input type="text"/>
C	<input type="text"/>
D	<input type="text"/>
E	<input type="text"/>

12

A	<input type="text"/>
B	<input type="text"/>
C	<input type="text"/>
D	<input type="text"/>
E	<input type="text"/>

13

A	<input type="text"/>
B	<input type="text"/>
C	<input type="text"/>
D	<input type="text"/>
E	<input type="text"/>

14

A	<input type="text"/>
B	<input type="text"/>
C	<input type="text"/>
D	<input type="text"/>
E	<input type="text"/>

15

A	<input type="text"/>
B	<input type="text"/>
C	<input type="text"/>
D	<input type="text"/>
E	<input type="text"/>

16

A	<input type="text"/>
B	<input type="text"/>
C	<input type="text"/>
D	<input type="text"/>
E	<input type="text"/>

Sub-test 3

EXAMPLE

A	<input type="text"/>
B	<input checked="" type="text"/>
C	<input type="text"/>
D	<input type="text"/>
E	<input type="text"/>

1

PRACTICE	
A	<input type="text"/>
B	<input type="text"/>
C	<input type="text"/>
D	<input type="text"/>
E	<input type="text"/>

2

PRACTICE	
A	<input type="text"/>
B	<input type="text"/>
C	<input type="text"/>
D	<input type="text"/>
E	<input type="text"/>

3

PRACTICE	
A	<input type="text"/>
B	<input type="text"/>
C	<input type="text"/>
D	<input type="text"/>
E	<input type="text"/>

17

A	<input type="text"/>
B	<input type="text"/>
C	<input type="text"/>
D	<input type="text"/>
E	<input type="text"/>

18

A	<input type="text"/>
B	<input type="text"/>
C	<input type="text"/>
D	<input type="text"/>
E	<input type="text"/>

19

A	<input type="text"/>
B	<input type="text"/>
C	<input type="text"/>
D	<input type="text"/>
E	<input type="text"/>

20

A	<input type="text"/>
B	<input type="text"/>
C	<input type="text"/>
D	<input type="text"/>
E	<input type="text"/>

21

A	<input type="text"/>
B	<input type="text"/>
C	<input type="text"/>
D	<input type="text"/>
E	<input type="text"/>

22

A	<input type="text"/>
B	<input type="text"/>
C	<input type="text"/>
D	<input type="text"/>
E	<input type="text"/>

23

A	<input type="text"/>
B	<input type="text"/>
C	<input type="text"/>
D	<input type="text"/>
E	<input type="text"/>

24

A	<input type="text"/>
B	<input type="text"/>
C	<input type="text"/>
D	<input type="text"/>
E	<input type="text"/>



Test 3 - Spatial Reasoning

Sub-test 1

EXAMPLE	
A	<input type="checkbox"/>
B	<input checked="" type="checkbox"/>
C	<input type="checkbox"/>
D	<input type="checkbox"/>
E	<input type="checkbox"/>

1 PRACTICE	
A	<input type="checkbox"/>
B	<input type="checkbox"/>
C	<input type="checkbox"/>
D	<input type="checkbox"/>
E	<input type="checkbox"/>

2 PRACTICE	
A	<input type="checkbox"/>
B	<input type="checkbox"/>
C	<input type="checkbox"/>
D	<input type="checkbox"/>
E	<input type="checkbox"/>

3 PRACTICE	
A	<input type="checkbox"/>
B	<input type="checkbox"/>
C	<input type="checkbox"/>
D	<input type="checkbox"/>
E	<input type="checkbox"/>

1	
A	<input type="checkbox"/>
B	<input type="checkbox"/>
C	<input type="checkbox"/>
D	<input type="checkbox"/>
E	<input type="checkbox"/>

2	
A	<input type="checkbox"/>
B	<input type="checkbox"/>
C	<input type="checkbox"/>
D	<input type="checkbox"/>
E	<input type="checkbox"/>

3	
A	<input type="checkbox"/>
B	<input type="checkbox"/>
C	<input type="checkbox"/>
D	<input type="checkbox"/>
E	<input type="checkbox"/>

4	
A	<input type="checkbox"/>
B	<input type="checkbox"/>
C	<input type="checkbox"/>
D	<input type="checkbox"/>
E	<input type="checkbox"/>

5	
A	<input type="checkbox"/>
B	<input type="checkbox"/>
C	<input type="checkbox"/>
D	<input type="checkbox"/>
E	<input type="checkbox"/>

6	
A	<input type="checkbox"/>
B	<input type="checkbox"/>
C	<input type="checkbox"/>
D	<input type="checkbox"/>
E	<input type="checkbox"/>

7	
A	<input type="checkbox"/>
B	<input type="checkbox"/>
C	<input type="checkbox"/>
D	<input type="checkbox"/>
E	<input type="checkbox"/>

8	
A	<input type="checkbox"/>
B	<input type="checkbox"/>
C	<input type="checkbox"/>
D	<input type="checkbox"/>
E	<input type="checkbox"/>

Sub-test 2

EXAMPLE	
A	<input checked="" type="checkbox"/>
B	<input type="checkbox"/>
C	<input type="checkbox"/>
D	<input type="checkbox"/>
E	<input type="checkbox"/>

1 PRACTICE	
A	<input type="checkbox"/>
B	<input type="checkbox"/>
C	<input type="checkbox"/>
D	<input type="checkbox"/>
E	<input type="checkbox"/>

2 PRACTICE	
A	<input type="checkbox"/>
B	<input type="checkbox"/>
C	<input type="checkbox"/>
D	<input type="checkbox"/>
E	<input type="checkbox"/>

3 PRACTICE	
A	<input type="checkbox"/>
B	<input type="checkbox"/>
C	<input type="checkbox"/>
D	<input type="checkbox"/>
E	<input type="checkbox"/>



9	10	11	12	13	14	15
A <input type="text"/>	A <input type="text"/>	A <input type="text"/>	A <input type="text"/>	A <input type="text"/>	A <input type="text"/>	A <input type="text"/>
B <input type="text"/>	B <input type="text"/>	B <input type="text"/>	B <input type="text"/>	B <input type="text"/>	B <input type="text"/>	B <input type="text"/>
C <input type="text"/>	C <input type="text"/>	C <input type="text"/>	C <input type="text"/>	C <input type="text"/>	C <input type="text"/>	C <input type="text"/>
D <input type="text"/>	D <input type="text"/>	D <input type="text"/>	D <input type="text"/>	D <input type="text"/>	D <input type="text"/>	D <input type="text"/>
E <input type="text"/>	E <input type="text"/>	E <input type="text"/>	E <input type="text"/>	E <input type="text"/>	E <input type="text"/>	E <input type="text"/>

16
A <input type="text"/>
B <input type="text"/>
C <input type="text"/>
D <input type="text"/>
E <input type="text"/>

For Parents use only

Marks Scored: _____ Time taken: _____

Comments _____



© piacademy.co.uk - All rights reserved

Visit piacademy.co.uk/11-plus-papers to check the 'answers'